



# Lahore Medical & Dental College

P r o s p e c t u s



## Punjab's 1st Private Medical College

Established in 1997, Lahore Medical & Dental College is committed in its pursuit of excellence to provide the best academic facilities & atmosphere to its students.

Our mission is to train future leaders of medicine who set new standards in knowledge, caring and compassion.



# TABLE OF CONTENTS

Chairman Message	2
Principal of Medicine Message	4
Principal of Dentistry Message	6
About Lahore UBAS	8
University Affiliation & International Accreditation	12
Educational Programs (MBBS / BDS)	14
Curriculum 2K23 Framework	15
MBBS Curriculum	21
Affiliated Teaching Hospitals	27
College of Dentistry	30
BDS Curriculum	31
Admissions : Medical & Dental	43
University Exam Rules & Regulations	45
Evaluation by Internal Assessment	46
Campus Life	48
LMDC Athletic	50
Student Housing / Hostels	55
Student's leave policy	56
Student fine policy	57
Code of conduct	58
Convocation	60
About Pakistan	61
Living in Lahore	62



Message From

## THE CHAIRMAN

I am pleased to welcome you to Lahore Medical and Dental College, now a part of The Punjab Group of Colleges, the largest education network in the country. This pivotal milestone in the College's history includes joining the ranks of four UBAS chartered universities: The University of Central Punjab, Capital University of Science and Technology, and Muhammad Ali Jinnah University, as well as over four hundred colleges and fifteen hundred schools across Pakistan. Having set the standard for private education, we as a group look forward to work with Maj General (R) Prof. Naeem Naqi, Prof. Dr. Aqib Sohail and their team of eminent doctors, surgeons, dentists and professors.

Being Punjab's first Medical and Dental College, established in 1997, we are not only recognised by Pakistan Medical & Dental Council but have been awarded the ranking of A. It is through this distinguished honour that our students can be part of a global community of doctors by appearing in professional examinations like US Medical Licensor Examinations and The Royal College of England Medical Certifications as well as the National Dental Board Examinations. I am proud to say that you will be able to find our graduates serving communities all over the world.

We aim to set a rigorous and comprehensive course of study for our students that will challenge and help them reach their highest potential. This community of medical practitioners, educators, researchers and professors aim to impart best existing practices and create new knowledge that saves and enhances lives. To do this, we have partnered with some of Lahore's leading hospitals: Doctor's Hospital and Ghurki Hospital. Not only this but, in the near future, we plan on establishing a new hospital within the premises of LMDC so that students may have access to and facilities to learn from the best doctors on campus in a practical and conducive environment.

We are defined by our sense of duty and service, our curiosity, our integrity, and a steadfast dedication to quality and excellence. We strive to instil in our students not only exceptional professional skills but empathy, accountability, compassion as well as a sense of community with their peers. We are proud to make future leaders in the field of science and medicine who are committed to addressing the health challenges of today and tomorrow.



A handwritten signature in black ink, appearing to read 'Amer Mahmood'.

**Mian Amer Mahmood**

Chairman Lahore Medical & Dental College



Message From

## THE PRINCIPAL

It is my proud privilege to Head Lahore Medical and Dental College (LMDC) as Principal. Lahore Medical and Dental College was established in 1997 as the first private medical institute in the province of Punjab. The premises of LMDC is purpose built and is spread over an area of 120 kanals. The college is affiliated with two Hospitals 640 bedded Ghurki Trust Teaching Hospital and 250 bedded Doctors Hospital. The college is fully recognized by Pakistan Medical and Dental Council with University of Health Sciences as its affiliating University. The premises comprise of equipped Medical and Dental Sections.

Lahore Medical and Dental College has come a long way in setting new dimensions in the medical education not only in Punjab but across Pakistan. State of the art training facilities and highly qualified and experienced faculty helps in creating best academic environment for the students.

Excellent infrastructure on LMDC campus e.g., Ample spaced, air-conditioned lecture theatres, well-resourced laboratories, Clinical skills Lab and Museums add to LMDC's rich academic environment. The college has well stocked library, providing latest references and course books to faculty and students. In addition, we facilitate research with access to 75000 electronic contents through HEC digital library.

Co-curricular & Extra-curricular activities play a major role in the well-being and personal development of students. LMDC has 11 Sports clubs and 11 Co-curricular societies which provide students the opportunity to show their talent. In addition, college has a well-developed mentoring programme by which our students can get academic/non-academic guidance from senior faculty.

Our students have outshined in university exams by securing university positions. Most of the departments of the college are accredited for postgraduate qualifications like FCPS and M.Phil./PHD. Our graduates are eligible to appear in foreign exams like USMLE and PLAB and most of the students cleared these exams with flying colors. Graduates of our college are successfully working in different parts of the world and LMDC Alumni is always willing to give extra ordinary support to fresh graduates.

LMDC is committed in its pursuit of excellence to provide the best academic facilities and congenial atmosphere to its students so that they can excel in a peaceful and serene environment.

I wish best of luck to coming new first year and welcome you all for an enjoyable academic experience.



## **Maj. Gen. (R) Prof. Naeem Naqi**

Principal, Lahore Medical and Dental College



Message From

## **THE PRINCIPAL** College of Dentistry

For most students, to join a medical or dental college is a childhood dream. We at LMDC work to make this dream come true. We welcome you to join LMDC. We provide at LMDC, an environment that fosters innovation, discovery and scholarly activity, an environment that makes it possible to teach as well as to educate students. To some, these words may seem interchangeable, but we submit that there is a significant difference. To us teaching implies the transfer of information from person to person—from teacher to student. Education is grooming of students to become civilized citizen and intellectual person.

And while this will continue to be vital, the dynamic and rapidly changing environment in which we live today demands that we do more than transfer information. In fact, information is rapidly becoming a commodity available through many channels. We at LMDC focus on knowledge, not information, and this demands that we create a culture of education that emphasizes the process of learning through interactions, engagements, discourse and critical analysis, something what makes LMDC what it is today. We intend to make our students lifelong learners: those who embrace, rather than fear, new initiatives and the opportunities in the field of dentistry. Choose LMDC to attain your career goals wherein you will find a rich and rewarding clinical environment coupled with a unique educational experience.

Most dental schools suffer from a densely packed, memory based, test driven, prescribed curriculum, making it difficult to introduce educational reforms. At LMDC we are different. Our outstanding faculty works closely with our patients and students to overcome this difficulty. It supports diversity in thinking and in human resources; one that encourages innovative, alternative approaches to issues. Additionally, it is one that approaches oral health care with a superb set of skills and an unmatched commitment to excellence and is eager to take on new challenges while having a strong sense of social responsibility—in true spirit of scholastic brilliance and a morally sound ethos.

Our graduates are not mere doctors, but they are humane scientists who continually seek and incorporate new philosophies in the field of dentistry and patient care.

Come join us, grow with us, and make a difference!





## **Prof. Dr. Aqib Sohail**

Principal, College Dentistry LMDC



# LMDC Awarded University Charter

As the first private medical college in Lahore and Punjab, LMDC is renowned for its dynamic academic programmes, cutting-edge curriculum and state-of-the-art facilities since 1997. In a significant milestone, LMDC has now achieved the esteemed status of a chartered university, Lahore University of Biological and Applied Sciences (Lahore UBAS) 4th University under the umbrella of Punjab Group. This is a testament to our unwavering commitment to delivering excellence in education, creating a brighter future for aspiring healthcare professionals in Lahore and beyond. The legacy of the Punjab Group in education stands as a beacon of excellence and dedication to nurturing the minds of tomorrow's leaders. With a rich history spanning several decades, the Punjab Group has been at the forefront of providing quality education across various disciplines. As the largest educational network in Pakistan, the Punjab Group's institutions have empowered countless students with the skills, knowledge, and values needed to succeed in a rapidly evolving world. Lahore UBAS stands proudly as 4th University under the umbrella of esteemed Punjab Group, a vast network encompassing over 1500 schools, 400+ colleges along with University of Central Punjab (UCP), Capital University of Science & Technology and Muhammad Ali Jinnah University, across the country.

## About Lahore UBAS

Lahore University of Biological and Applied Sciences (Lahore UBAS) is dedicated to shaping the future of tomorrow's leaders in the fields of Biological, Health, Social and Applied sciences. Our vision is to empower students with practical knowledge and skills to thrive in today's competitive world. With a focus on excellence in teaching, research and community engagement, Lahore UBAS aims to be a catalyst for positive change and societal development.



**LAHORE UNIVERSITY  
OF BIOLOGICAL & APPLIED  
SCIENCES**



**LAHORE  
MEDICAL & DENTAL  
COLLEGE**

Lahore Medical & Dental College (LMDC) was founded as a private medical college in 1997 making it the first private institution of its kind in Punjab. Our main campus is situated near the serene and peaceful setting of Lahore's northern canal and houses buildings for all of our academic programs.

Lahore Medical & Dental College has been recognized by the Pakistan Medical & Dental Council for over a decade, covering our College of Medicine (M.B.B.S). and College of Dentistry (B.D.S).

This recognition gives our graduates full eligibility to take their education to the next level by completing further education and appearing in professional examinations on a global scale – a step many of our graduates have taken – in the US, UK, Europe, and more. These include all of the United States medical licensure examinations, Royal College of England medical certifications, as well as full clearance to appear in the National Dental Board (NBD) part 1 + 2 exams, to just name a few.



## Lahore Medical & Dental College

Our PMDC recognition also allows students, upon graduation, to obtain residency in medical facilities around the world along with placement in Doctor of Dental Surgery (DDS) programs in the top universities so that students may utilize their degree and education to the maximum level.

At LMDC we offer an international standard of education to help prepare you for the future and to ensure that you obtain all of the credentials required to achieve your career goals no matter what the location. We are proud to have had many of our students go on to complete post-graduate degree educations and are now working in hospitals and dental clinics worldwide.



Connected to the newly constructed ring road, our campus is easily accessible from all areas of Lahore with a short drive. Our institution is spread over a sprawling 120 kanals of land and houses modern, attractive, and state of the art lecture theaters, auditoriums, dissection halls, laboratories and more.

Along with our educational departments, our campus also contains impressive museums in pathology, forensic & community medicine, a technology driven IT computer lab, along with outpatient clinics for didactic training and procedures in dentistry.







The teaching staff at LMDC comprises of renowned doctors, surgeons, dentists and professors who offer students an in-depth level of education to prepare them for successful careers across the spectrum of healthcare.



We are also proud to be partnered with the top teaching facilities in the country including the 610-bedded Ghurki Trust Teaching Hospital and their modern Spine Centre, 250-bed Doctors Hospital and Medical Center. These facilities offer our students hands-on clinical teaching and training rivaling the top institutions around the globe.

Lahore Medical & Dental College is committed in its pursuit of excellence to provide the best academic facilities and atmosphere for our students and is proud to have many of our graduates now working in high level positions in the U.S., UK, and numerous other locations around the world.

Our mission is to train future healthcare leaders who set new standards in knowledge, caring and compassion through our medical, dental, nutrition sciences, life sciences, physical therapy, and pharmacy programs.



# University Affiliation

Lahore Medical & Dental College is recognized by Pakistan Medical & Dental Council, affiliated with University of Health Sciences, Lahore. With this partnership all of our degrees awarded are fully recognized on international level for students to pursue advanced education and to appear in post graduate examinations in the US, UK, Europe, and more.

Through our PMDC recognition & UHS affiliation, LMDC is accredited with the College of Physicians and Surgeons Pakistan for FCPS-II training, registered with WHO and FAIMER, approved by the Pakistan Ministry of Health, as well as the United States Education Department (NCFMEA) and the General Medical Council U.K.



## PAKISTAN MEDICAL & DENTAL COUNCIL

Lahore Medical & Dental College has been recognized by the Pakistan Medical & Dental Council for over a decade, covering our College of Medicine (M.B.B.S). and College of Dentistry (B.D.S).

This recognition gives our graduates full eligibility to take their education to the next level by completing further education and appearing in professional examinations on a global scale – a step many of our graduates have taken – in the US, UK, Europe, and more.

These include all of the United States medical licensure examinations, Royal College of England medical certifications, as well as full clearance to appear in the National Dental Board (NBD) part 1 + 2 exams, just to name a few.

Our PMDC recognition also allows students, upon graduation, to obtain residency in medical facilities around the world along with placement in Doctor of Dental Surgery (DDS) programs in the top universities so that students may utilize their degree and education to the maximum level.

At LMDC we offer an international standard of education to help prepare you for the future and to ensure that you obtain all of the credentials required to achieve your career goals no matter the location. We are proud to have had many of our students go on to complete post-graduate degree educations and are now working in hospitals and dental clinics worldwide.

## International Accreditation Of PMDC

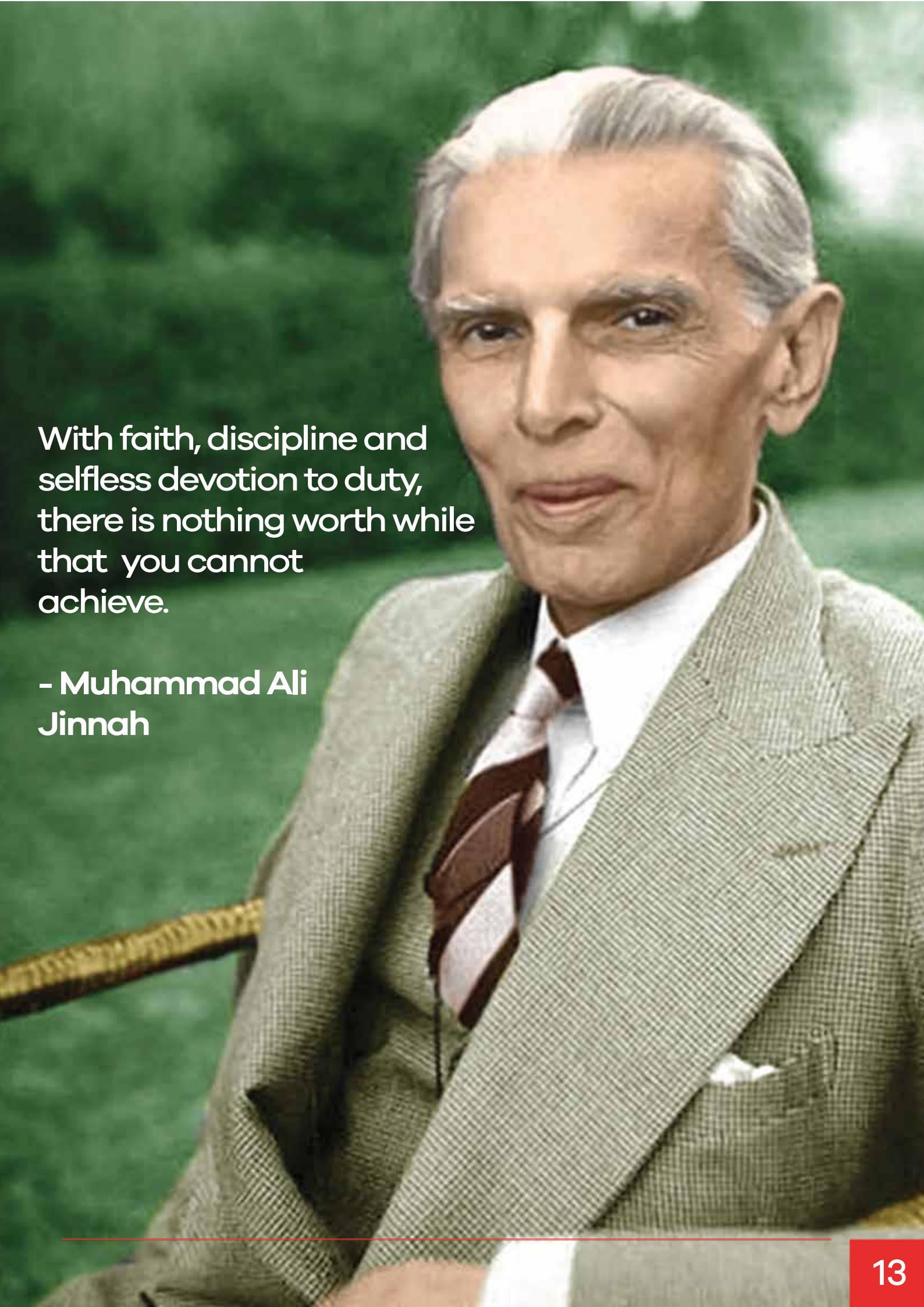
### United States Education Department (NCFMEA)

The system of recognition/accreditation through inspection by PMDC had also been reviewed by the National Committee on Foreign Medical Education & Accreditation (NCFMEA) of U.S. department of education. The standards used by PMDC for accreditation and inspection of medical and dental colleges in Pakistan have been declared comparable to U.S. standards.

### General Medical Council U.K. IMED & FAIMER

The system of accreditation had also been approved by the General Medical Council U.K. and all the colleges recognized under the PMDC ordinance 1962 are also automatically recognized by the General Medical Council and the graduates of these colleges are eligible to sit in PLAB examination for the purpose of higher education in United Kingdom. Previously the General Medical Council used to conduct inspection of medical colleges in Pakistan through their own inspection team for the purpose of recognition of medical college. All the colleges recognized under the PMDC ordinance 1962 are also automatically recognized by FAIMER and IMED in the world directory.



A color portrait of Muhammad Ali Jinnah, an elderly man with white hair, wearing a light-colored suit and a striped tie. He is seated outdoors with green foliage in the background. The text is overlaid on the left side of the image.

With faith, discipline and  
selfless devotion to duty,  
there is nothing worth while  
that you cannot  
achieve.

- Muhammad Ali  
Jinnah

## Educational Program



### Undergraduate Medical Education (MBBS)

Our college of medicine offers a program in which students are accepted in the first year class for the five years session leading to the degree of Bachelor of Medicine and Bachelor of Surgery (M.B.B.S). Many of our MBBS graduates have gone on to complete residencies in various specialties and are now practicing in prestigious hospitals around the world.

### Undergraduate Dental Education (BDS)

Our college of dentistry offers undergraduate dental education (BDS) in which students are accepted in the first year class for the four years program leading to the degree Bachelor of Dental Surgery (B.D.S.). Many of our BDS graduates have gone on to complete their National Board Dental examinations and further completed their Doctor of Dental Surgery (DDS) degree from leading institutions in the U.S., UK, and other countries.

### Syllabus and Curriculum for MBBS & BDS Degrees

The curriculum at LMDC follows guidelines of PMDC and University of Health Sciences. It follows PMDC mission of producing a seven star doctor having the generic competencies: skillful, Knowledgeable, Community health promoter, Researcher, Professional, Scholar, Leader and Role Model.

LMDC follows UHS Modular Integrated curriculum. The purpose of integrated Modular curriculum is to encourage students to think as doctors from the day they enter medical school. In this curriculum, basic sciences is placed in the context of clinical practice, thus leading to a deeper understanding of medicine.

The goal is to prepare our students not only through education but also to instill in them the hands on clinical and technical skills required to pursue long lasting careers. The Outcomes of LMDC curriculum are overarching statements reflecting the intended abilities of LMDC graduates on exit from the medical program. These essential abilities are educational statements that provide the path for developing curricular content, teaching and learning strategies and assessments.

A thematic framework organizes our graduate outcomes into three domains:

1. **Clinical practice:** The medical graduate as a medical practitioner
2. **Health and society:** The medical graduate as a healthcare advocate
3. **Professionalism and Leadership:** The medical graduate as a professional and leader





## Curriculum 2K23 Framework

The University of Health Sciences Lahore has designed a five-year modular framework for integrated curriculum based on specific systems, clinical clerkships, Quran, and Professionalism.

YEAR	MODULES	
YEAR 1	<ul style="list-style-type: none"> <li>Foundation-1</li> <li>Hematopoietic &amp; Lymphatic</li> </ul>	Block 1
	<ul style="list-style-type: none"> <li>Musculoskeletal &amp; Locomotion-1</li> </ul>	Block 2
	<ul style="list-style-type: none"> <li>Cardiovascular-1</li> <li>Respiratory-1</li> </ul>	Block 3
	<ul style="list-style-type: none"> <li>PERLs 1</li> <li>Quran-1</li> <li>Islamiyat &amp; Pak Studies</li> </ul>	Will be taught throughout the year
	<ul style="list-style-type: none"> <li>Clinical Skills Foundation C-FRC1 (Clinical-Foundation, Rotation, Clerkships)</li> </ul>	
YEAR 2	<ul style="list-style-type: none"> <li>GIT &amp; Nutrition</li> <li>Renal</li> <li>Endocrinology &amp; Reproduction</li> <li>Neurosciences</li> <li>Head &amp; Neck, Special Senses</li> <li>Inflammation</li> <li>PERLs - 2</li> <li>Quran-2</li> <li>Islamiyat &amp; Pak Studies</li> </ul>	
	<ul style="list-style-type: none"> <li>Clinical Skills Foundation C-FRC2 (Clinical-Foundation, Rotation, Clerkships)</li> </ul>	
YEAR 3	<ul style="list-style-type: none"> <li>Foundation-2</li> <li>Infectious Diseases</li> <li>Neoplasia</li> <li>Musculoskeletal &amp; Locomotion-2</li> <li>Hematopoietic, Immunity &amp; Transplant-2</li> </ul>	
YEAR 4	<ul style="list-style-type: none"> <li>Cardiovascular-2</li> <li>Respiratory-2</li> <li>Forensic medicine</li> <li>Community Medicine &amp; family Health-1</li> <li>PERLs - 3</li> <li>Quran-3</li> </ul>	<ul style="list-style-type: none"> <li>Clinical Rotations C-FRC 3 (Clinical-Foundation, Rotation, Clerkships)</li> </ul>
	<ul style="list-style-type: none"> <li>Renal-2</li> <li>Endocrine &amp; Reproduction-2</li> <li>GIT &amp; Nutrition-2</li> <li>Neurosciences-2</li> <li>Maternal &amp; Child Health</li> <li>Ophthalmology</li> <li>Otorhinolaryngology</li> <li>Community Medicine &amp; family Health-2</li> <li>Psychiatry &amp; Behavioral Sciences</li> <li>PERLs - 4</li> <li>Quran-4</li> <li>Electives</li> <li>BLS workshop</li> </ul>	<ul style="list-style-type: none"> <li>Clinical Rotations C-FRC 4 (Clinical-Foundation, Rotation, Clerkships)</li> </ul>
YEAR 5 (Clerkships)	<ul style="list-style-type: none"> <li>Gynecology &amp; Obstetrics</li> <li>Pediatrics</li> <li>Medicine</li> <li>Surgery</li> </ul>	<ul style="list-style-type: none"> <li>Clinical Clerkships C-FRC5 (Clinical-Foundation, Rotation, Clerkships)</li> </ul>

## CURRICULAR OUTCOMES OF THE MEDICAL PROGRAM

The graduate outcomes are overarching statements reflecting the intended abilities of LMDC graduates on exit from the medical program. These essential abilities are educational statements that provide the path for developing curricular content, teaching and learning strategies and assessments.

A thematic framework organizes our graduate outcomes into three domains:

1. **Clinical practice:** the medical graduate as a medical practitioner
2. **Health and society:** the medical graduate as a healthcare advocate
3. **Professionalism and Leadership:** the medical graduate as a professional and leader

## OBJECTIVES OF THE MBBS CURRICULUM

Keeping in view the intended graduate outcomes, following objectives of MBBS program are formulated for guidance of the medical curriculum. The ultimate goal is to produce well-trained graduates who efficiently assume patient care responsibilities expected of new medical graduates.

## 1. MEDICAL GRADUATE AS MEDICAL PRACTITIONER

**The curriculum must ensure that the graduate understands the scientific basis of medicine and is able to apply it to the practice of medicine by demonstrating:**

- 1.1.** Knowledge of normal, altered and abnormal structure of the body and its organ systems encountered frequently in different physiological and pathological conditions
- 1.2.** Knowledge of normal, altered and abnormal functions of the body and its organ systems is encountered frequently in different physiological and pathological conditions.
- 1.3.** Knowledge of biochemical and genetic basis of diseases including cancers, homeostatic mechanisms and the disturbances commonly encountered in clinical practice
- 1.4.** Ability to apply basic principles of human nutrition in clinical practice and recognition of vulnerable groups for timely interventions, ability to recognize conditions resulting from deficiency or excess of various nutrients and suggest appropriate and prompt measures
- 1.5.** Knowledge of the clinical, biochemical, radiological, and pathological manifestations of common diseases, and ability to interpret and efficiently utilize this knowledge for diagnostic and prognostic purposes
- 1.6.** Ability to obtain an accurate, pertinent yet comprehensive history and perform general and systemic examination efficiently
- 1.7.** Ability to reason deductively and inductively in solving clinical problems and to construct appropriate management strategies for patients with common acute and chronic conditions
- 1.8.** Ability to efficiently perform common procedures (as specified separately for different subjects)
- 1.9.** Ability to recognize patients with immediately life threatening cardiac, pulmonary, or neurological conditions, and to institute appropriate initial therapy
- 1.10.** The ability to communicate effectively, both verbally and in writing, with patients, patients' families, colleagues and other members of health care team
- 1.11.** Capability to engage in lifelong learning to keep abreast with the recent advances

## 2. MEDICAL GRADUATE AS A HEALTHCARE ADVOCATE

**The curriculum must ensure that the graduate understands the need to promote, maintain and improve the health of individuals and community by demonstrating:**

- 2.1.** Knowledge of the risk factors for disease and injury and how to effectively employ disease and injury prevention practices.
- 2.2.** Knowledge of the determinants of poor health and the economic, psychological, social, and cultural factors that contribute to the development and/or prolongation of diseases.
- 2.3.** Knowledge of the epidemiology of common diseases within a defined population, and the systematic approaches useful in reducing the incidence and prevalence of those diseases.
- 2.4.** Ability to retrieve, manage, and utilize recent scientific information and evidence-based knowledge for solving problems and making decisions that are relevant to the care of individuals and populations.
- 2.5.** Knowledge of the system involved in the organization, financing, and delivery of health care.
- 2.6.** Ability to advocate for health care needs of underprivileged populations.

### 3. MEDICAL GRADUATE AS A PROFESSIONAL AND LEADER

The curriculum must ensure that the graduate understands the importance of professionalism and leadership qualities by demonstrating:

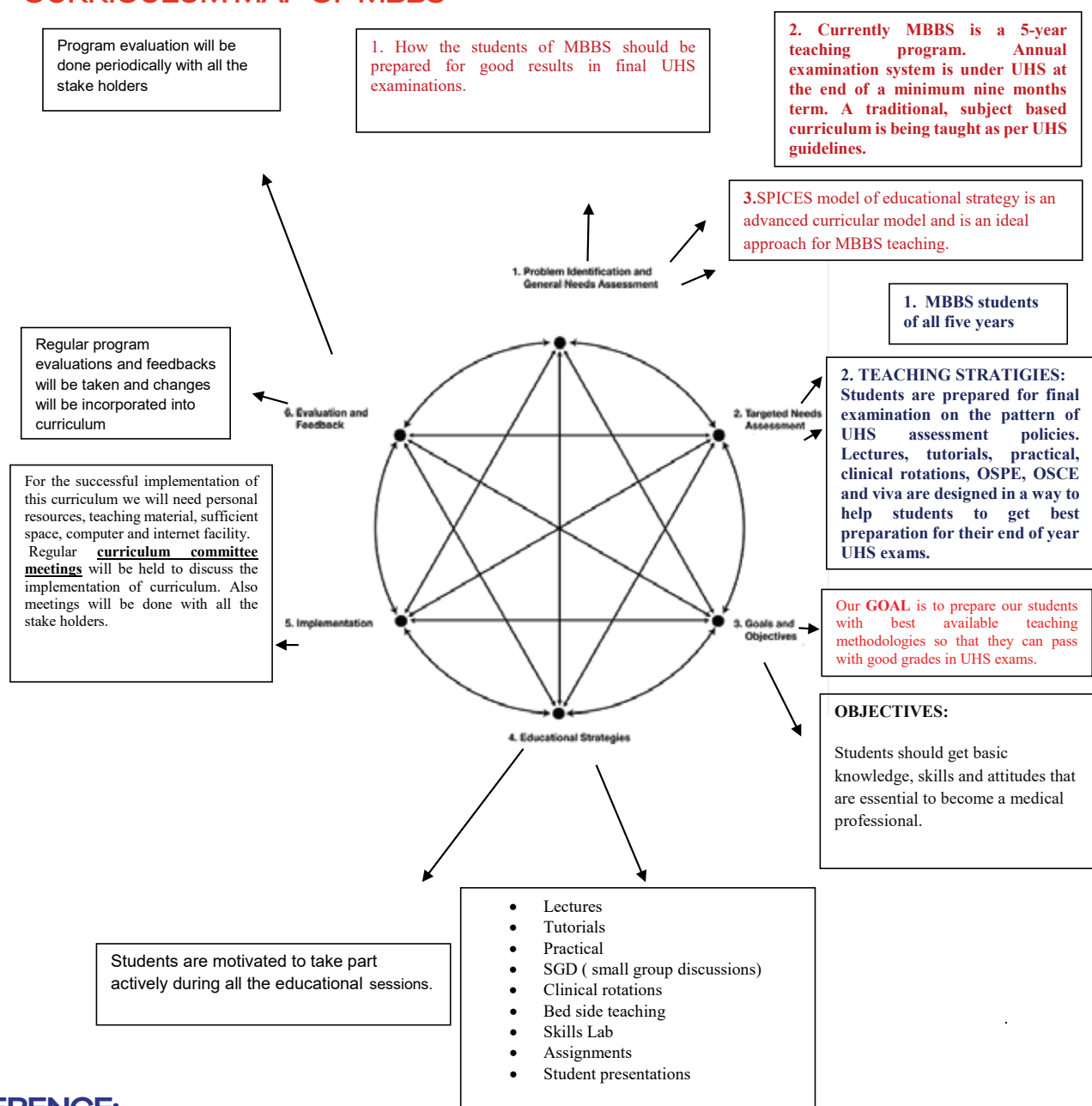
- 3.1. Knowledge of the principles that govern ethical decision making and a commitment to bring to the practice of medicine those attitudes and values that underpin ethical and beneficent medical care.
- 3.2. Ability to practice professionalism without any discrimination.
- 3.3. Empathy while caring for patients, and respect their privacy and dignity.
- 3.4. Integrity and trustworthiness in professional dealings.
- 3.5. Ability to perform collaboratively with members of health care team, capability to lead when appropriate and to defer to the leadership of others when indicated.
- 3.6. Accountability to patients, community and the profession.

#### ALIGNMENT OF CURRICULAR OUTCOMES AND OBJECTIVES WITH VISION AND MISSION

UHS VISION	LMDC VISION	LMDC MISSION	OUTCOMES	OBJECTIVES
“Qualitative and Quantitative Revolution in Medical Education and Research through Evolution and thereby Improve Health Care Delivery to Populace”.	To foster a culture of innovation, diversity, and learning for our students by putting students first and training them to be the best Healthcare professionals, researchers and visionaries.	To train future leaders of medicine who will set new standards in knowledge, care, and compassion.	<b>CLINICAL PRACTICE:</b> Medical graduate as a medical practitioner	The curriculum must ensure that the graduate understands the scientific basis of medicine and is able to apply it to the practice of medicine by demonstrating:
				1.1. Knowledge of normal, altered and abnormal structure of the body and its organ systems encountered frequently in different physiological and pathological conditions
				1.2. Knowledge of normal, altered and abnormal functions of the body and its organ systems encountered frequently in different physiological and pathological conditions.
				1.3. Knowledge of biochemical and genetic basis of diseases including cancers, homeostatic mechanisms and the disturbances commonly encountered in clinical practice
				1.4. Ability to apply basic principles of human nutrition in clinical practice and recognition of vulnerable groups for timely interventions, ability to recognize conditions resulting from deficiency or excess of various nutrients and suggest appropriate and prompt measures
				1.5. Knowledge of the clinical, biochemical, radiological, and pathological manifestations of common diseases, and ability to interpret and efficiently utilize this knowledge for diagnostic and prognostic purposes
				1.6. Ability to obtain an accurate, pertinent yet comprehensive history and perform general and systemic examination efficiently
				1.7. Ability to reason deductively and inductively in solving clinical problems and to construct appropriate management strategies for patients with common acute and chronic conditions
				1.8. Ability to efficiently perform common procedures (as specified separately for different subjects)

				<p>1.9. Ability to recognize patients with immediately life threatening cardiac, pulmonary, or neurological conditions, and to institute appropriate initial therapy</p>
				<p>1.10. The ability to communicate effectively, both verbally and in writing, with patients, patients' families, colleagues and other members of health care team</p>
				<p>1.11. Capability to engage in lifelong learning in order to keep abreast with the recent advances</p>
				<p><b>The curriculum must ensure that the graduate understands the need to promote, maintain and improve the health of individuals and community by demonstrating:</b></p>
				<p>2.1. Knowledge of the risk factors for disease and injury and how to effectively employ disease and injury prevention practices</p>
				<p>2.2. Knowledge of the determinants of poor health and the economic, psychological, social, and cultural factors that contribute to the development and/or prolongation of diseases.</p>
			<p><b>HEALTH AND SOCIETY:</b> Medical graduate as a healthcare advocate</p>	<p>2.3. Knowledge of the epidemiology of common diseases within a defined population, and the systematic approaches useful in reducing the incidence and prevalence of those diseases</p>
				<p>2.4. Ability to retrieve, manage, and utilize recent scientific information and evidence-based knowledge for solving problems and making decisions that are relevant to the care of individuals and populations</p>
				<p>2.5. Knowledge of the system involved in the organization, financing, and delivery of health care</p>
				<p>2.6. Ability to advocate for health care needs of underprivileged populations</p>
				<p><b>The curriculum must ensure that the graduate understands the importance of professionalism and leadership qualities by demonstrating:</b></p>
				<p>3.1. Knowledge of the principles that govern ethical decision making and a commitment to bring to the practice of medicine those attitudes and values that underpin ethical and beneficent medical care</p>
			<p><b>PROFESSIONALISM AND LEADERSHIP:</b> Medical graduate as a professional and leader</p>	<p>3.2. Ability to practice professionalism without any discrimination</p>
				<p>3.3. Empathy while caring for patients, and respect their privacy and dignity</p>
				<p>3.4. Integrity and trustworthiness in professional dealings</p>
				<p>3.5. Ability to perform collaboratively with members of health care team, capability to lead when appropriate and to defer to the leadership of others when indicated</p>
				<p>3.6. Accountability to patients, community and the profession</p>

## CURRICULUM MAP OF MBBS



## REFERENCE:

Kern DE, Thomas PA, Hughes MT editors. Curriculum development for medical education, A six-step approach. 2nd ed. United States of America: The Johns Hopkins University press; 2009.

## Subjects in MBBS Programme

**Anatomy:** Anatomy is the oldest medical discipline, which encompasses the study of biological structure at various levels. The curriculum of Anatomy covers all aspects of cell biology, Gross and Microscopic Anatomy, Embryology and Neuro-anatomy. The study of cell biology includes light and electron microscopic structures and function of cells with special reference to membranes, organelles, inclusions, metabolism, transport, division, growth, aging and cell specialization. Gross Anatomy covers the study of structure and functions of human organ systems and their relation to each other. Practical experience would be gained by dissection of human body and study with the help of models, specimens, charts and histological slides would help the students to develop clear concepts of Anatomy.

The study of Embryology covers the principles of reproduction, fetal growth and development with explanation of various structural relationships in the human body and etiology of developmental anomalies. The study of Neuro-anatomy covers the basic principles of organization and functions of nervous system.



# MBBS Curriculum

## Basic Medical Sciences



### Biochemistry

The biochemistry course aims to give our students an understanding of the basic principles of structure and function of various chemical elements that constitute living cells.

The course is structured into three distinct portions in order to provide a logical approach to the subject:

- i). the nature of Bio-molecules
- ii). the study of synthesis, breakdown and biological function of essential bio-molecules
- iii). the understanding of chemical and molecular processes which form the basis of health and disease.

Our students receive hands-on training by performing practicals in the laboratory - further expanding the concepts discussed in lectures and seminars into real world scenarios. The student will be introduced to the methods of biochemical analysis by various techniques used for separation, identification and measurement of bio-molecules relevant to clinical sciences. Students are also introduced to the concept of chemical pathology, when measurement of bio-molecules are used for diagnosis and monitoring of disease states.

### Physiology

The study of Physiology covers the function and behavior of living systems from sub-cellular and cellular levels to organ function and body as a whole.

The interaction of living organisms with the environment, concepts of energy and biological control systems, and biophysics of cell membrane would be given special emphasis, study of physiological functions of major organ systems of the body would be dealt with in detail in addition to other integrated aspects of body functions such as learning, behavior, internal haemostasis, voluntary and involuntary motor control and memory.

All this theoretical teaching would be assisted by practical work in laboratory which includes in vitro study of organ function aided by advanced recording and monitoring equipment and techniques.

### Pharmacology

The course of Pharmacology is introduced in the third year. It covers the physiological effects of drugs on the cells and organs of man, chemical structure and mechanism of action of drugs, and effects of drugs on cellular mechanism.

These form the basis of an understanding of the use and abuse of drugs in society and their influence on community health. The therapeutic uses of drugs and an understanding of adverse drug reactions form an integral part of the preparation for clinical practice.



## Forensic Medicine & Toxicology

This course is introduced in third year. Forensic medicine includes medical ethics; principles of legal system in Pakistan, duties and responsibilities of doctors, medical aspects of law in relation to poisons; their recognition, treatment and collection of viscera and their analytical methods. Factory Act, Workmen compensation, social security (industrial injuries).

Medico-legal aspects of death, crimes of violence-homicide, suicide, accident, firearm injuries, explosions, railway and vehicular injuries, medico-legal autopsy-exhumation. Identification problems, sexual assaults, medico-legal aspects of pregnancy, delivery abortions, impotency, application of Dyat and Hudood ordinance in case of Zina (adultery) and other offence of violence.

Medical negligence - Professional secrecy - Privileged Communication. Legal proceedings - Law of evidence - Responsibility in law (Criminal responsibility including testamentary capacity - contract law-writing will consent in medical treatment - validity of printed consent forms, general procedure of inquiring into the matters needing medico-legal investigation



## Pathology

Pathology is concerned with dearrangement of tissue structure and function in disease associated with clinical signs and symptoms. That is why the clinico-pathological approach is the foundation of clinical practice and is to be taught very well. With rapid technological advancement the scope of the subject has been broadened with enormous increase in the knowledge of structural and functional changes produced in tissues at ultra-microscopic and molecular level in diseases. So only basic principles are to be taught and supplemented with practical work at undergraduate level. The subject of Pathology is taught in 3rd year and continues in the 4th year. It's includes General Pathology and Special Pathology (Histopathology, Hematology, Clinical and Chemical Pathology), Immunology and Microbiology, including Parasitology. General Pathology and Microbiology are covered in 3rd year class and Special Pathology in 4th year MBBS class. Microbiology covers the fundamental principles of Bacteriology, Virology, Mycology, Immunology and Parasitology. The knowledge, so acquired is of help in diagnosis and treatment of microbial diseases.



## Community Medicine

Community Medicine is taught in 4th years MBBS class & includes the study and application of a wide range of social sciences, concepts of health economics, human behavior, socio-anthropology and social determinants of health and disease.

The study of epidemiology, demography and biostatistics would also be introduced at appropriate stages. Special emphasis is given to the planning and management of primary health care systems and students are also involved in field work under the guidance and supervision of trained staff.

Field surveys are planned in the urban and rural areas to assess the peoples health status and projects are designed and planned accordingly.

Students are involved in preventive curative care and research oriented projects are developed.

## Medicine Objectives and Scopes

The principal objective of the department of medicine is to educate students about the expert diagnosis and compassionate management of human illness, building on the biochemical, physiological and behavioral foundation of clinical experience.

Students are taught information acquisition through history taking, physical examination, and laboratory evaluation.

Information synthesis through achieving differential diagnosis and evaluation plan and medical decision making for continued evaluation and therapy. Students are encouraged and guided in the development of caring physician and patient relationship.

The junior and senior years of medical school constitute a continuum of clinical experience. The curriculum is arranged to provide maximum flexibility. The department offers an extremely broad range of advanced clinical clerkship in general medicine and sub specialties.

Students become integrated into a ward team, apply and extend their clinical skills, medical knowledge and judgment in the care of patients assigned to them under the immediate supervision of House Officer and Medical Officers. In addition to the regular sessions, seminars, morning meetings and case presentations enhance the student's participation.



## Islamiat and Pakistan Studies

A course of Islamiat and Pakistan Studies is given in 1st Year BDS and 2nd year MBBS. It entails the study of Islam as a religion, it's contribution to human civilization, it's prime aim is to guide the students to evolve their own codes of behavior with respect to medical ethics and relationships with patients and society.

The course of Pakistan Studies includes a study of ideology of Pakistan, Pakistan movement, the efforts made to create an Islamic system in the country, Pakistan's role in the Muslim world and the impact of social and industrial development on health.

## MBBS Curriculum

# Clinical Science



### Surgery

#### Objectives and Scopes

The faculty of surgery is responsible for the teaching and training of medical students, keeping in view the needs of our society, in a structured program.

Clinical teaching is provided at Ghurki Trust Teaching Hospital, Lahore to third, fourth and final year medical students. They are taught basic principles in surgery i.e. infections and inflammation, asepsis, tumors, immunity and transplantation, fluid and electrolyte balance, specific infections like tuberculosis, anastomotic techniques and principles.

Specialized surgery topics included are hernia, intestinal obstruction, peptic ulcer, gall stones, gastrointestinal malignancy, skin tumors, thyroid diseases, breast pathologies, rectal problems, urinary tract infections and tumors, renal calculi diseases, etc. They are also taught topics in Neurosurgery, Paediatrics surgery, Plastic surgery, Orthopedic surgery, Vascular surgery and Cardio thoracic surgery.

These topics are discussed in tutorials, discouraging a didactic form of teaching. All the students in a group are expected to participate in the ensuing discussion.

The students are exposed to a wide variety of surgical problems, where they are expected to clerk patients and elicit clinical signs, under the supervision of a tutor. They are encouraged to order relevant investigations, reach a plausible diagnosis and institute management, on scientific basis, thus making them independent thinkers and ensuring their graduation as safe medical practitioners.

The process of evaluation is continuous. Examinations are carried out regularly and their results are given due weight-age, and therefore included in the final examination results.

### Orthopedics

A full-fledged Orthopedics Department is functioning in Ghurki Trust Teaching Hospital, Lahore. The department is headed by a well reputed qualified Orthopedic Surgeon. Two wards of 40 beds each have been earmarked for this department.

The department is very well attended by patients in OPD and in wards. The operation theater is equipped with state of the art equipment. All types of operations are performed, particularly of Spinal Surgery.

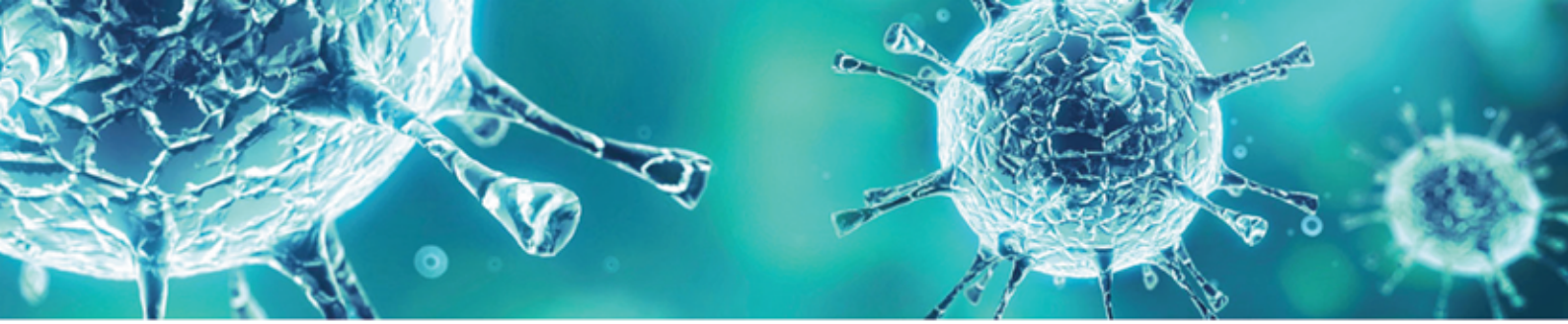
### Radiology

This department is headed by an experienced qualified Professor. CT Scan, X-ray Plants, Ultrasound, Colour Dopplers, Mammography facilities are available.

This department has a heavy work load. Free facilities are offered to the deserving patients.

### Urology

This department is headed by an experienced qualified Professor. The department is well equipped and all sorts of operations are performed to help students with hands on learning.



# MBBS Curriculum Clinical Sciences

## **Obstetrics and Gynecology** **Objectives and Scopes:**

The educational program in Obstetrics and Gynecology is designed to teach students female physiology in infancy, childhood and adolescence, reproductive endocrinology during menstruating years, management of pregnancy and delivery and understanding of changes in post menopausal years.

The program includes the management of normal and abnormal obstetrical conditions, the anatomical and physiological variants following childbirth and gynecological abnormalities not necessarily related to reproduction. The emotional aspects of genital development and prenatal and intra natal abnormalities and oncological aspects of reproductive tract.

Work in the wards and outpatient clinic is designed for providing practical experience in the methods and techniques of examination and diagnosis. Students are assigned specific patients and take part in their prenatal care and management. Detailed clinical discussions of current clinical problems are held regularly with faculty, this experience constitutes the clerkship in Obs. & Gynae.

Students participate in general prenatal care, conduct of labor and delivery and after care of patients. They are responsible for the preliminary history and examination of selected gynecological patients, assist in gynecological surgeries and participate in post operative care. They learn to carry out investigations and to perform minor surgeries.

## **Dermatology**

Dermatology is the branch of medicine dealing with hair, nails, skin and their diseases. It is a specialty with both medical and surgical aspects. A dermatologist treats diseases in the widest sense, and some cosmetic problems of the skin, scalp, hair, and nails.

The Department of Dermatology is headed by an experienced qualified professor. and aims to give students practical experience in the field .

## **Ophthalmology**

Department of Ophthalmology provides instructions to medical students through lectures, demonstrations, discussions, and the opportunity to observe patients and review cases. Emphasis is on history taking and techniques of examination of eye.

The Department of Ophthalmology has been established with facilities of surgery. It is a land mark of continued progress in upgrading the clinical education. The Department is equipped with sophisticated technology and equipment which would no doubt expand the horizons of learning in medical education.

## **Paediatrics**

The clinical clerkship in Pediatric department provides experience in the pediatric wards nurseries and out patient clinics. The goal of the clerkship is to enhance students clinical skill through diseases experience and responsibility for patient care. The students are given enormous opportunity to participate in numerous seminars and clinical meetings.



## **Anesthesiology Objectives & Scope**

The development of art and application of scientific knowledge to the administration of anesthetics has made modern surgery possible.

Anesthesiology is the direct application of physiology and pharmacology to the practice of medicine.

The purposes of Department of Anesthesiology are many. Instructions are given in administration and management of types of general and local anesthesia for surgical procedures. Skill in resuscitation and airway management are taught. The teaching of various aspects of anesthesiology extends through out the length of clinical training of medical college.

The Department of anesthesiology feels that primary obligation to the medical students is to provide basic information for the attendance of unconscious patients, to teach necessary skills for resuscitation.

## **Neurosurgery Objectives & Scope**

This deals with the affections & diseases of the nervous system. It provides means for coordinating basic sciences and clinical research approach to neurological disorders, patient care and neurological application.

Staff members discuss with the students common disorders of nervous system through lectures and clinical cases.

The department is headed by a qualified Neurosurgeon. while multiple operations are being



## **Otorhynolaryngology**

All over the world Ear, Nose, Mouth diseases form bulk of medical practice. Pakistan is no exception. The department emphasizes on the learning of E.N.T. through out-patient observation, attending in-patient clinics, attending operation theater procedures and going through clinico pathological conferences where students participate by case presentation.

## **Psychiatry & Behavioral Sciences**

Present day medical education stresses on the understanding of normal personality development and dynamic processes which underlie psychopathology as well as art of dealing with these and the application of this knowledge to patient care.

Special attention is paid to understanding the common psychological problems seen in clinical practice and special attention is given to community psychiatry when medical students participate in clinical experience with psychiatric patients. They learn to take case history and conduct mental status examination. Differential diagnosis and treatment are discussed.

A full-fledged department of Psychiatry and Behavioral Sciences has been established. The department is headed by a qualified Psychiatrist. Regular lectures are delivered and practicals are conducted.

**EDUCATION** IS  
THE MOST  
**POWERFUL**  
**TOOL** YOU CAN  
USE TO CHANGE  
**THE**  
**WORLD.**

**NELSON MANDELA**



# Affiliated Teaching Hospitals

Lahore Medical & Dental College is proud to be partnered with the top teaching institutions in the country including Doctors Hospital & Medical Center and Ghurki Trust Teaching Hospital. These facilities offer our students unparalleled hands on training and education preparing them for successful careers globally.

## Ghurki Trust Teaching Hospital

Ghurki Trust Hospital is a 610 bed Teaching Hospital affiliated with Lahore Medical & Dental College, recognized by Pakistan Medical & Dental Council (PMDC) and affiliated with University of Health Sciences (UHS). Situated across the BRB Canal, surrounded by 110 villages with a population of 1.2 million, the hospital provides basic as well as advanced health facilities to the ailing humanity.



The hospital services include Emergency, Out-Patients and In-Patients Departments for General Medicine, General Surgery, Gynecology/Obstetrics, Orthopedics, Paediatrics, Dermatology, Urology, Ophthalmology, ENT, Anesthesia, Psychiatry, Radiology, Pathology, Dentistry, Physiotherapy and Vaccination Centre.

**Spine Center:** The first of its kind in Pakistan, a fully equipped Spine Centre has been constructed in Ghurki Trust Teaching Hospital, Lahore, costing Rs. 300 million. This center has been commissioned and was inaugurated by Begum Zakia Aziz on 9th April 2014. This Spinal Centre is 160 bedded and has modern operation theaters, ICUs, CSSD Unit and Rehabilitation and Physiotherapy Units.



## Doctors Hospital & Medical Center

Doctors Hospital and Medical Center has been internationally recognized for its excellence in health care thanks to its medical services and consultancy standards and is proud to be a direct teaching partner with Lahore Medical & Dental College.

Covering the spectrum of all medical specialties, equipped with state of the art technologies, and a staff of American/British Board certified doctors, Doctors Hospital continues to provide the highest level of health care in the country of Pakistan. With keeping our standards on par with international levels, AXA PPP Health Care International UK has included Doctors Hospital & Medical Centre on its approved listing of Hospitals that are authorized to provide medical care to its members in UK and all over the world, making DHMC one of only 3 facilities in the country with this distinction. LMDC students are rotated at Doctors Hospital in various sub-specialties such as emergency medicine, intensive care and cardiac surgery, covering the entire spectrum of medical care.











# College of Dentistry

The LMDC College of Dentistry aims to produce dental graduates who have the education and hands on training to practice dentistry across the globe. Our dental program is headed by Prof. Dr. Aqib Sohail who offers decades of experience in clinical and administrative work. Compared to other dental institutions in Pakistan, our dental faculty is proud to offer the most experienced and educated environment in the country to our students giving them an education of international level and hands-on training.

The dental college at LMDC is fully equipped with the state of the art equipment including 124 dental units, phantom head laboratories, OPG machines, operation instruments, dental materials laboratories, and more.

Our dental departments include Oral Biology & Tooth Morphology, Science of Dental Materials, Community Dentistry and Oral Pathology while the basic subjects of Anatomy, Physiology, Biochemistry, Pharmacology, Pathology and Behavioral Sciences are taught by the faculty of medical side.

The clinical departments in the College of Dentistry consist of Periodontology, Oral Medicine, Oral & Maxillofacial Surgery, Prosthodontics, Operative Dentistry, Orthodontics and Oral Diagnosis. These on-campus dental clinics offer our students hands on experience that rivals any dental facility in Pakistan or across the world. Our clinics are heavily attended by the general public and give students the chance to view, diagnose, and treat a vast array of dental cases on a daily basis. This pairing of dental education along with didactic training offers an unparalleled level of education by letting our students take what they have learned in their first two years of study and apply that to real world scenarios by working directly with patients under the supervision of our senior dentists.

We are proud to note that many of our dental graduates have gone on to complete their National Board Dental examinations in the US along with Doctor of Dental Surgery degrees from prestigious universities such as New York College of Dentistry, University of Pennsylvania School of Dental Medicine, Kings College in the UK, to name a few.

Our College of Dentistry aims to provide our students the skill sets required not only to complete examinations with the highest of results but also to be skilled in actual hands on dental procedures and develop successful global careers in dentistry.





## BDS Curriculum

Our college of dentistry offers undergraduate dental education (BDS) in which students are accepted in the first year class for the four years program leading to the degree Bachelor of Dental Surgery (B.D.S.).

### Outcomes of Dental Undergraduate Program (BDS)

The desired competencies of LMDC graduates upon completion of the dentistry (BDS) program are reflected in the graduate outcomes. These fundamental skills are educational statements that offer guidance and clarity for creating lesson plans, instructional techniques, and evaluation protocols.

The outcomes of a dental undergraduate program (BDS) can be organized within a thematic framework to provide a comprehensive understanding of the skills and knowledge that graduates should possess.

1. Clinical Competencies
2. Community Health Promoter
3. Professionalism
4. Research and evidence-based practice
5. Interdisciplinary Collaboration

### Objectives of the Dental Program:

The goals of this program are designed to guide the dentistry curriculum and align with our college's mission, the vision of UHS, and the desired results.

This will produce graduates who are ready to take on the patient care obligations required of newly graduated resident dentists and who will have the qualities that a fully qualified dental surgeon should have to practice.

## 1. Clinical Competencies

Objective	Graduates should demonstrate proficiency in clinical skills, including dental examinations, diagnosis, treatment planning, and the execution of various dental procedures. This theme emphasizes their ability to provide high-quality patient care.
Knowledge	<ul style="list-style-type: none"> <li>• To differentiate normal and abnormal oral and dental tissues.</li> <li>• To diagnose and treat common and simple oral/dental diseases.</li> <li>• To successfully diagnose and relieve dental/pulpal pain and oro-facial pain</li> <li>• To successfully diagnose patients with periodontal diseases and successfully apply the theory.</li> <li>• To know the basic principles of cone beam CT scan.</li> <li>• To participate and attend scientific conferences and activities.</li> <li>• To volunteer in current research projects pertinent to the faculty.</li> </ul>
Skill	<ul style="list-style-type: none"> <li>• To prepare and restore teeth using amalgam and tooth colored program.</li> <li>• To successfully extirpate the pulp and perform root canal treatment of single rooted teeth.</li> <li>• To identify the clinical indications for using different dental implant system</li> <li>• To treat patient indicated for simple removable partial dentures and complete dentures.</li> <li>• To identify the clinical indications for single metal ceramic crowns and metal ceramic bridge.</li> <li>• To describe clinical indications for veneers, metal free ceramics.</li> <li>• To identify the need for orthodontic treatment in dental patients.</li> <li>• To successfully give local anesthesia in the oral cavity.</li> <li>• To successfully perform non-surgical extraction and identify the clinical indications for various oral surgical procedures.</li> <li>• To recognize and apply cross infection control guidelines in dental practices.</li> <li>• To select the best treatment option based on medical, dental, social consideration of the patient as well as the available resources.</li> <li>• To recognize advanced cases that need specialist care and refer to the appropriate specialist.</li> <li>• To select and follow up appropriate scientific resources of information containing updated new guidelines, material and treatment modalities.</li> <li>• The ability to communicate effectively, both verbally and in writing with patients, patient's families, colleagues and allied health professionals.</li> <li>• To recognize the basic steps of the research process.</li> </ul>
Attitude	<ul style="list-style-type: none"> <li>• To provide routine dental care to the community</li> </ul>

## 2. Community Health Promoter

Objective	The dental graduate must ensure that the graduate understands the need to promote, maintain, and improve the health of individuals and the community by demonstrating.
Knowledge	<ul style="list-style-type: none"> <li>• Knowledge about the risk factors for the diseases and how to utilize disease prevention practices for the patient.</li> <li>• Knowledge of the determinants of poor dental health and of the economic, psychological, social, and cultural factors that contribute to the development and/or continuation of dental disease.</li> <li>• Knowledge of the epidemiology of the common dental diseases within a defined population, and systematic approaches useful in reducing the incidence and prevalence of those diseases.</li> <li>• Knowledge of various approaches to the organization, financing, and delivery of dental health care.</li> </ul>
Skill	<ul style="list-style-type: none"> <li>• The ability to retrieve, manage, and utilize biomedical information for solving problems and making decisions that are relevant to the care of individuals and populations.</li> <li>• A commitment to advocate in voluntary community dental activities.</li> </ul>
Attitude	<ul style="list-style-type: none"> <li>• To show increased participation in voluntary community dental activities.</li> </ul>

### 3. Professionalism:

Objective	The dental college must ensure that the graduate understands professionalism and leadership qualities by demonstrating:
Knowledge	<ul style="list-style-type: none"> <li>• Knowledge of the principles that governs ethical decision making.</li> <li>• Accountability to patients, community and the profession.</li> </ul>
Skill	<ul style="list-style-type: none"> <li>• Trust and integrity in professional dealings.</li> <li>• Capability to lead when appropriate and to defer to the leadership of others when indicated.</li> </ul>
Attitude	<ul style="list-style-type: none"> <li>• Empathy while caring for patients and respect their privacy and dignity.</li> <li>• A commitment to bring to the practice of dentistry those attitudes and values that underpin ethical and beneficent dental care.</li> <li>• A commitment to work collaboratively with other fellow colleagues, dentist and healthcare professionals.</li> </ul>

### 4. Research and evidence-based practice

Objective	This theme encourages graduates to engage in research and apply evidence-based practices to enhance patient care and keep up with the latest advancements in dentistry.
-----------	---

Knowledge	<ul style="list-style-type: none"> <li>• Identify a researchable problem and critically review literature</li> </ul>
Skill	<ul style="list-style-type: none"> <li>• Phrase succinct research questions and formulate hypothesis</li> <li>• Identify the appropriate research design(s) in epidemiology and analytical tests in biostatistics to answer the research question</li> <li>• Collect, analyze and evaluate data, and present results</li> </ul>
Attitude	<ul style="list-style-type: none"> <li>• Demonstrate ethics in conducting research and in ownership of intellectual property</li> </ul>

## 5. Interdisciplinary Collaboration

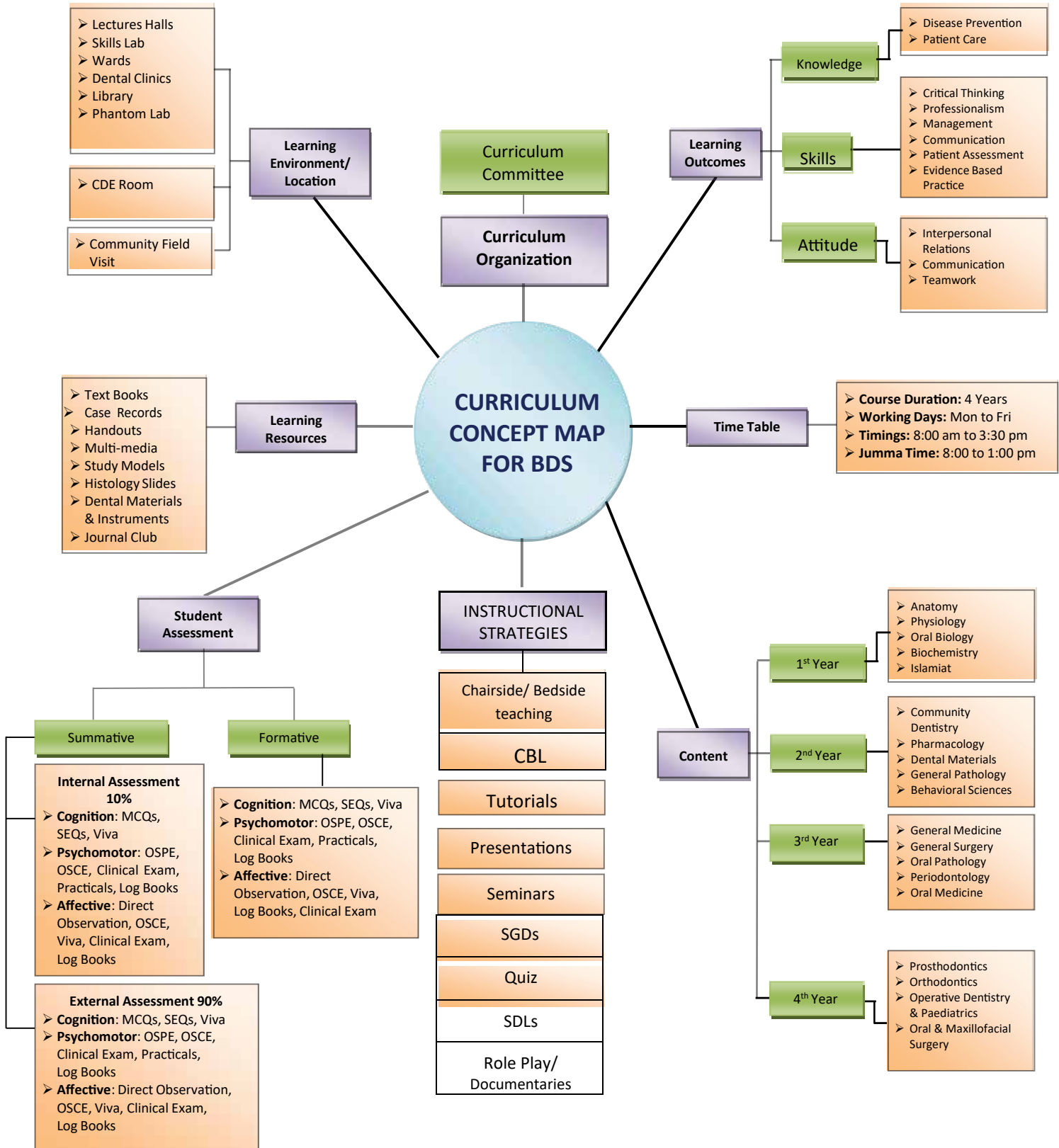
Objective	Graduates should be skilled at collaborating with other healthcare professionals to provide comprehensive care when needed.
Knowledge	<ul style="list-style-type: none"> <li>• Understanding effective communication techniques, including both verbal and non-verbal communication, as well as different communication styles and their impact on collaboration</li> <li>• Awareness of the importance of shared goals and objectives within interdisciplinary teams and how they contribute to better patient outcomes</li> </ul>
Skill	<ul style="list-style-type: none"> <li>• Proficiency in working collaboratively within a team, including active listening, giving and receiving feedback, and resolving conflicts constructively</li> <li>• The skill to plan and coordinate care with other professionals, considering the unique contributions of each discipline and the patient's needs.</li> <li>• Proficiency in sharing relevant patient information, keeping records, and ensuring the secure exchange of medical data among interdisciplinary team members</li> </ul>
Attitude	<ul style="list-style-type: none"> <li>• A respectful and empathetic attitude towards patients, their families, and other healthcare team members, valuing diversity and the unique contributions of each team member</li> <li>• Taking responsibility for one's actions and decisions, and being reliable and dependable as a team member</li> <li>• Being open to change, able to adapt to evolving healthcare practices, and willing to embrace new technologies and advancements in healthcare</li> </ul>

This thematic framework helps organize the diverse skills and knowledge that graduates of a BDS program should acquire. It provides a holistic view of the competencies and values that a well-rounded dental professional should possess to excel in their field and serve the needs of their patients and communities effectively.

Academic Year	Orientation Week	Additional Activities	Quarter 1 <sup>st</sup>	Monthly Test/Quarterly assess ment	Quarter 2 <sup>nd</sup>	Monthly Test/Quarterly assess ment	Quarter 3 <sup>rd</sup>	Monthly Test/Quarterly assess ment	Internal Assessment Calculation	Send Up Examinations	1 <sup>st</sup> Annual Professional Examination	2 <sup>nd</sup> Annual Professional Examination	3 <sup>rd</sup> Annual Professional Examination	4 <sup>th</sup> Annual Professional Examination					
Year 1	Orientation + Clinical rounds (in groups) + Student medical examination	Skills + Peer Learning Sessions	<b>Examinable Subjects:</b> Anatomy + Physiology + Oral Biology + Biochemistry + Islamic and Pakistan Studies  <b>Non-Examinable Subjects:</b> None						Monthly/ Quarterly Test Results + Attendance	MCQs/SEQs/OSPE/OSCE/Viva Voce	MCQs/SEQs/OSPE/OSCE/Viva Voce	MCQs/SEQs/OSPE/OSCE/Viva Voce	MCQs/SEQs/OSPE/OSCE/Viva Voce	MCQs/SEQs/OSPE/OSCE/Viva Voce					
Year 2	Presentation Skills + Peer Learning Sessions	Case-Based Learning Sessions/Assignments																	
Year 3		<b>Examinable Subjects:</b> Pathology + Pharmacology + Dental Materials + Community Dentistry + Behavioral Sciences  <b>Non-Examinable Subjects:</b> Junior Operative + Junior Prosthodontics																	
		<b>Examinable Subjects:</b> General Medicine + General Surgery + Oral Pathology + Oral Medicine + Periodontology  <b>Non-Examinable Subjects:</b> Operative Dentistry + Prosthodontics + Oral and Maxillofacial Surgery																	
Year 4			<b>Examinable Subjects:</b> Operative Dentistry + Prosthodontics + Oral and Maxillofacial Surgery + Orthodontics  <b>Non-Examinable Subjects:</b> None																



# CURRICULUM MAP FOR BDS



## Subjects to be Examined

- 1st Year:** Oral Biology & Tooth Morphology, Anatomy, Biochemistry, Physiology, Islamiat and Pak Studies
- 2nd Year:** Dental Materials, Community & Preventive Dentistry, General Pathology, Pharmacology, Behavioral Sciences
- 3rd Year:** General Medicine, General Surgery, Oral Pathology, Oral Medicine, Periodontology
- Final Year:** Prosthodontics, Orthodontics, Operative Dentistry, Oral Surgery

## Dental Sciences

### Oral Biology & Tooth Morphology

Oral biology & tooth morphology is a foundation course in dentistry which is taught during the first year. The course consists of four components including Oral Histology, Oral Anatomy, Oral Physiology and Tooth Morphology.

Oral Biology includes the study of development, structure and function of oral cavity (mouth). The course begins with an introduction to the structure and development of teeth. This will be followed by detailed study of the tooth and supporting structures of the tooth. Also included in the course are study of the related oral tissues (oral mucosa, salivary glands & temporomandibular joint) and relevant physiology of oral cavity.

There are three lectures scheduled every week on the subject and each lecture is followed by a practical session. Oral Biology and tooth Morphology are examined as one university subject in First Professional BDS examination.



### Community & Preventive Dentistry

Community & Preventive Dentistry encompasses the aspects of promoting health, prolonging life and preventing oral diseases in the population.

Students are given the concepts of Oral Epidemiology, Oral Health Promotion, Health Economics, Human behavior in the society as well as in the clinic, socio-anthropology and determinants of Oral health and disease. The study of Planning and managing oral health programs, Oral health care systems and questionnaires and biostatistics are introduced at appropriate stages.

All lectures delivered are evidence based and up-to-date and current with the new advancements in the subject. Students as groups and individuals are required to deliver multimedia presentations as a requirement of the subject and are fully assisted with the process as needed.

Typodonts are used initially to develop concepts and later Phantom-heads are used as patient simulation for understanding and practice of different clinical examinations taught in the course. This is carried out in the fully equipped Dental Skills lab.

### Science of Dental Materials

The aim and objective of this department is to provide the students with the basic knowledge of dental materials, their manipulation and their clinical applications.

Apart from lectures we have a practical component in which students are given a hands-on experience of the materials and their manipulation in the labs.



The course covers a wide a range of topics including:

Mechanical and Physical properties, the Structure of Matter & Principles of adhesion

The types of impression materials used today in clinics including Elastic & Non-Elastic impression materials with their properties and advantages and disadvantages.

Dental waxes, ceramics, denture based acrylic resins, investment materials, soldering and casting process represent the prosthetic component of this department and its syllabus various drugs used as intracanal medicaments are also a part of our course.



## Biochemistry

The course should provide the students with a sound knowledge on the concepts of Biochemistry which are applied to Dental Science. The students should be conversant with the principles and clinical applications of Biochemistry, the structure and properties of amino acids, peptides and proteins. An introduction to the nature of enzymes and enzymatic reactions, mineral metabolism, whole body metabolism, biological carbohydrates and fats.

### III. Oral Biology and Tooth Morphology

#### Oral Anatomy

Microscopic and macroscopic anatomy of the jaws and associated parts in man. Bones, ligaments, muscles, nerves and vessels. Oral digestion. Saliva, salivary glands, mastication, deglutition, microscopic structure of dental tissues.

Nasomucous Membranes, enamels, dentine, cementum, pulp, gingiva & periodontal tissues. Development of teeth and jaws. Eruption and resorption of teeth. Articulation of teeth and movement of mastication.

#### Oral Histology

The microscope and its accessories, principles governing their use and methods of working with them. Histology and functions of various dental tissues, both soft and hard, e.g. gingiva, periodontal membranes, alveolar process, cementum, dentine, enamel, nasomucous membrane etc.

The preparation of:

- (i) hard tissues
- (ii) soft tissues
- (iii) combined hard and soft tissues.





## Periodontology

Periodontology is an emerging specialty in the field of dentistry which deals with the diseases of the tooth supporting structures. The subject of Periodontology is taught and examined in 3rd year BDS. During the academic year, the students are trained to appreciate the normal periodontium, assess the pathological conditions related to tooth supporting structure and the influences of various systemic diseases on periodontium.

In the clinical sessions the students are equipped with the skills to carry out various treatment modalities to manage the patients suffering from periodontal diseases.

The department provides non-surgical and surgical Periodontal treatment to the masses. For the advanced surgical procedures such as guided tissue regeneration (GTR) periodontal plastic surgery and implant surgeries, the department has established a fully equipped implant center as well.

## Oral Medicine

Oral medicine is that area of special competence in dentistry concerned mainly with diseases involving the oral and perioral structures, especially the oral mucosa and the oral manifestation of systemic diseases.

It also includes diagnosis and treatment of diseases involving orofacial tissues and dental treatment of medically compromised patients

The subject is divided into two components theory and OSPE. We are associated with oral diagnosis department where students undergo intense training of examining the patients and referring them to their respective departments.

The Subject enables students to diagnose oral diseases and their medical management without surgical intervention.

## Oral Pathology

In the study of oral and dental sciences, Oral Pathology is the subject that deals with the nature, identification and management of diseases affecting the oral and maxillofacial region.

The department of Oral Pathology has educational goals for the 3rd year BDS, B.Sc. Technology and Dental Hygienist students.

The department provides an overview of oral and maxillofacial pathology including the clinical Histopathology and Radiographic presentation of Oral diagnosis and pathogenesis. The study of microscope, tissue processing, diagnostic tests and advanced techniques are also included.

Objectives of teaching this subject to undergraduate students

- To familiarize the students with various oral diseases
- To familiarize the students with the oral manifestations of certain diseases
- Help student identify the sign and symptoms of various oral lesions
- To familiarize students with various diagnostic techniques applicable in every condition

BDS Curriculum

# Dental Science

# Dental Sciences



## Oral & Maxillofacial Surgery

Oral and Maxillofacial Surgery (OMFS) is the specialty of Dentistry that encompasses the art and science of the diagnosis and surgical management of diseases, injuries, and defects of the Oral and Maxillofacial region. It is also designed to develop instinct to become a life long learner and take active part in Continual Dental Education (CDE)

The curriculum is designed to train the students to provide services of Oral Surgery (Exodontia) for the management of patients in practice of general dentistry.

The Oral & Maxillofacial Surgery Department is based at Lahore Medical & Dental College (LMDC), and affiliated with the Ghurki Trust Teaching Hospital (GTTH), Lahore.

The clinical facility at the College has 27 dental units. The OMFS Unit at GTTH has 20 beds. Procedures under local anesthesia are conducted at LMDC and those under general anesthesia at GTTH.



## Prosthodontics

Department of Prosthodontics, Lahore Medical and Dental College was established in year 2002. The department's facilities include a clinical hall and an adjacent laboratory. Since its foundation the department has been striving for quality and reliability. It facilitates the undergraduate (BDS, DTC) and postgraduate students (FCPS and house officers). This department deals with the management of partially edentulous and complete edentulous patients. It also provides help to oral and maxillofacial department in management of maxillofacial patients TMJ patients and trauma patients.

The department's faculty members, teaching and supporting staff consists of twenty members, including one professor three assistant professors, two senior registrars, four demonstrators and two full time technicians and ten members of the supporting staff. Six to eight house surgeons are designated for two months in the department according to the duty roster.



## Operative Dentistry

The department of operative dentistry of Lahore Medical and Dental College is one of the largest departments of faculty of dentistry.

The department is responsible for clinics namely Restorative, Endodontics, Crown & Bridge and Paedodontics and is catering to about 9000 patients a year. The department also carries out the preclinical training/ lectures of 2nd year BDS in Restorative Dentistry and clinical training/ lectures of Third year BDS and Final year BDS in Operative Dentistry.

This department is also recognized as the center of FCPS training by the College of Physicians and Surgeons of Pakistan. More than 16 FCPS trainees completed their training from this department. Three of them are our faculty members now.

## Orthodontics

The Department of Orthodontics is actively involved in the academic activities, teaching, and service. In the undergraduate program, it facilitates the students in didactic and clinical teaching of orthodontics.

Comprehensive treatment of different malocclusions is available for patients of all ages in our open-design clinic. Minor tooth movement procedures may be provided by student dentists under the supervision of faculty members.

Comprehensive orthodontic treatment is provided by the faculty members only.





# Admissions: Medical & Dental

Lahore Medical and Dental College offers a five years undergraduate programme leading to the degree of Bachelor of Medicine & Bachelor of Surgery (MBBS) and Bachelor of Dental Surgery (BDS). Admission to the Medical College in MBBS & BDS programme is based on merit under the guidelines laid down by the Pakistan Medical & Dental Council Islamabad (PMDC) and the University of Health Sciences, Lahore.

## Eligibility Criteria

### Local Applicants

a. A candidate must have passed F.Sc. (Pre-Medical)/HSSC or an equivalent examination from outside Pakistan with three subjects out of which Biology, Chemistry and Physics or Mathematics are mandatory subjects with 60% marks in aggregate as certified by IBCC in the above terms shall be accepted.

b. A candidate must have passed the MDCAT (55% marks for MBBS and 50% marks for BDS).

### Foreign /Overseas Applicants

a. The applicant must have permanent foreign nationality or is an overseas (being a Pakistani citizen permanently resident in a foreign country) Pakistani, and who has studied and passed HSSC 12th grade examination or equivalent from outside Pakistan and is a resident of a foreign country at the time of applying for admission and possess a certificate from the institution last attended to this effect.

b. The applicant having obtained his/her HSSC or Equivalent 12th grade qualification from outside Pakistan with three subjects out of which Biology, Chemistry and Physics or Mathematics are mandatory subjects with 60% marks in aggregate as certified by IBCC in the above terms shall be accepted.

c. The applicant must have passed the MDCAT or a foreign SAT II examination with a minimum score of 550 in each subject or a foreign MCAT examination or UCAT examination with 50% marks in the subjects as prescribed in PMDC regulations.

### MERIT CALCULATION FOR MBBS:

The merit list is arranged by a weightage formula as under:-

- Matric/SSC/Equivalent (10%)
- FSc. (Pre-Medical) HSSC/ Equivalent (40%)
- Admission Test (MDCAT) (50%)



# Admissions: Medical & Dental

## Documents Required for Admission

Photo copies of following documents must be attached with the application form:

1. Valid Matric or Equivalence Certificate along with 'O' Level Transcript.
2. Valid F.Sc. or Equivalence Certificate along with 'A' Level Transcript.
3. Domicile Certificate
4. CNIC of Student & Father.
5. Entry Test result.
6. Four Passport Size Photographs (Sky Blue Background)

## Rules/Procedures

1. Admission schedule of MBBS and BDS courses is advertised in the national dailies and on website by UHS.
2. Eligible Student can submit their application for admission through online/UHS portal.
3. Selection will be made pursuing the PMDC/UHS criteria.
4. 150 candidates will be selected for the admission in MBBS and 75 candidates will be selected for admission in BDS class.
5. Selected candidates will be informed of their admission through E-mail/UHS portal.
6. Selected candidates will be given a time of three days for depositing college dues. Failure to deposit college dues in time will result in cancellation of admission.

## Fee Structure

As per rules of Pakistan Medical & Dental Council, Islamabad (for detail visit [www.lmdc.edu.pk](http://www.lmdc.edu.pk))

## Refund Policy

College follows the policy which is given by the PMDC / University of Health Sciences for refund of tuition fee to the students, and is subject to change as per the direction of Regulatory Authority.

### NOTE:

LMDC will follow the admission policy of PMDC/UHS. Any change if needed, in admission policy by the concerned regulatory authorities shall be implemented accordingly.



# University Exam Rules & Regulations

Examination system comprises of theory paper, practical and oral as prescribed by University of Health Sciences, Lahore. Besides regular evaluation by the individual department at every stage of training, there are House examinations as well as send-up examination prior to each professional examination of the University.

1. Only one annual and one supplementary of First, Second, Third, Fourth and Final Professional MBBS and BDS Examinations shall be allowed in one year. In exceptional situation i.e., national calamities, war or loss of solved answer books in case of accident, special examination may be arranged after having observed due process of law. This will require permission of relevant authorities, i.e. Syndicate and Board of Governors.
2. Date Sheets, once notified, shall not be changed. The Vice Chancellor shall however, under exceptional circumstances to be recorded in writing may recommend such a change for approval of the Syndicate in an emergent meeting.
3. The eligibility of each candidate shall be checked according to laid down criteria and regulations of Pakistan Medical & Dental Council.
4. As per University Regulations the minimum number of marks required to pass each subject shall be fifty-percent (50%) in theory, and fifty-percent (50%) of the aggregate in the oral and practical/clinical and fifty-percent (50%) in the clinical examination separately at one and the same time.
5. On notification of date of the examination, the eligible candidates shall be required to submit Admission Forms duly attested by the Principal of respective College on or before the date notified for the purpose along with prescribed fee. The Principal must certify that the candidates concerned have actually attended 85% of the lectures delivered and practical/clinical in each block of sessions conducted during the academic year as well as in aggregate.

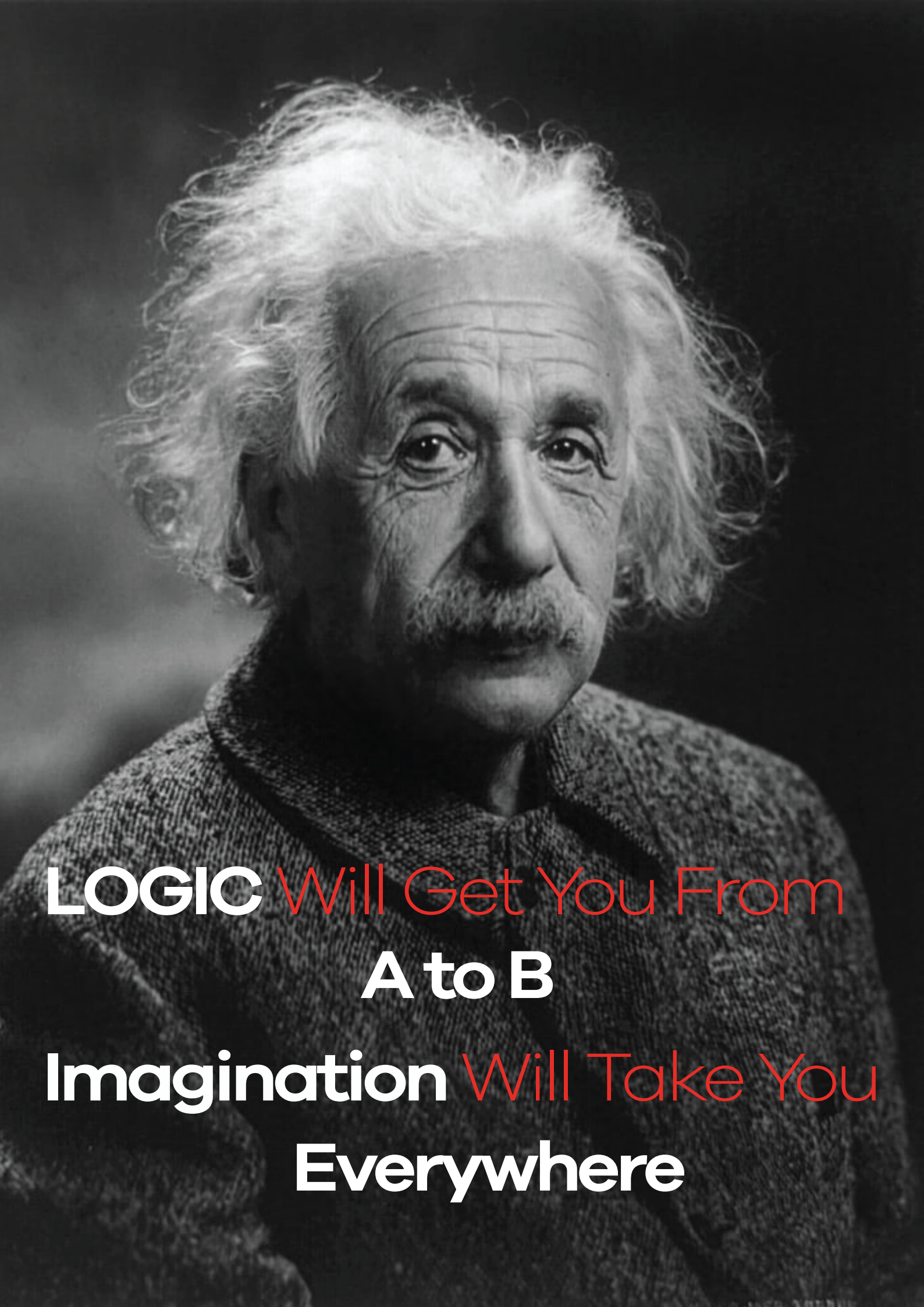
## Evaluation by Internal Assessment

- The weightage of internal assessment shall be 20% in integrated modular system and will be calculated from the blocks result.
- Continuous internal formative assessment shall consist of evaluation at the end of each block, e.g. stages/sub-stages, class tests etc., assignments from educational and/or clinical supervisors, clinical skill assessment from clinical supervisors, and Year's work books.
- Assessment of knowledge, Skills and Attitude shall contribute towards internal assessment. Methods used to assess these domains shall include multiple choice questions of one-best type, short answer questions, oral/viva and Practical/Clinical Examinations.
- Final University Examination of each block shall contribute 80% to total score, and the contribution of score of internal assessment shall be 20% i.e. 10% to the theory and 10% to the practical/viva examinations. ]
- Awards of internal assessment in the blocks of all the candidates shall be submitted to the Controller of Examinations along with Admission Forms for the annual examination. Internal assessment received after commencement of the final examination shall not be accepted.
- The marks of internal assessment shall be submitted after each block prior to annual examination and the same shall be counted both for annual and supplementary examinations. It is further emphasized that fresh assessment or a revision of assessment for supplementary examination shall not be permissible.
- Proper record of continuous internal formative assessment shall be maintained by respective departments of the medical colleges.

### Academic Standards

- Final graduation of a student will depend on the following:
- Each student must have successfully completed and passed graduation requirements including all required and elective courses and passing of the examinations conducted by the university.
- Each student must have demonstrated the necessary ethical and professional qualities required of a physician.
- Throughout the course of study, the appropriate Medical College Advisory Members will monitor students' performance. In the event a student fails in the professional examination at any level, appropriate action will be recommended by the Medical School Advisory members, i.e. recommended tutoring, special courses or a leave of absence to improve the students performances.
- All students who have not failed the course for the second time and who's behavior has not been judged to be unprofessional will be considered to be making satisfactory progress and will be considered in good standing.

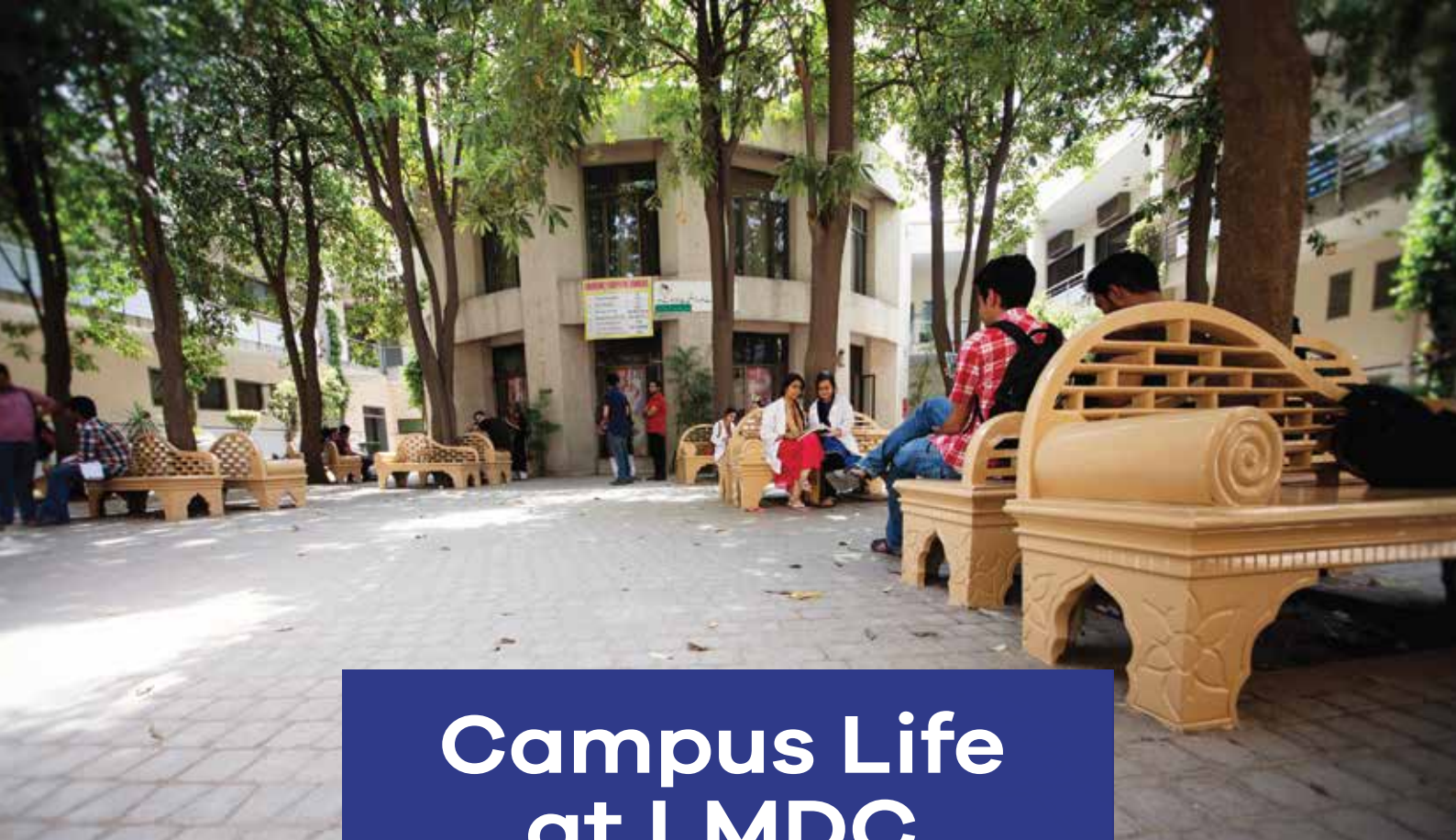




**LOGIC** Will Get You From  
A to B

**Imagination** Will Take You  
Everywhere





# Campus Life at LMDC

At LMDC we know students often need a break from their rigorous study schedule and we encourage you to do so with LMDC sports, extracurricular activities, student groups, and more. Check out what the LMDC campus has to offer to make your time here easier and more enjoyable.

## Creative Activities Clubs

At LMDC we offer a number of clubs and student groups to inspire and create relaxing, enjoyable activities for our students. The following clubs are amongst our most popular:

1. Literary Club
2. Dramatic Club
3. Photography Club

Debates and Mushaira are held every year at the college premises for the cultural and intellectual enhancement of students with regular events being held throughout the year.

## Campus Cafe

The campus cafe offers students fresh quality snacks, drinks, and hot meals throughout the day including pizza, french fries, burgers, sandwiches, salads and more to help crave any appetite. The cafe is open to all students and staff during regular college hours.



## Skills Lab

The Skills Lab is fully furnished and is equipped with mannequins, multimedia, study models and more.

The lab is instrumental in developing specific curriculum based skills in our students by the use of physical mediums and technology. Our faculty development program help groom our junior teachers to become accomplished teachers of tomorrow. This Skills Lab also provides hands-on training to undergraduate as well as to postgraduate students of medical & dental to learn clinical skills in different fields.

The Skills Lab is also utilized to provide hands-on training facilities in clinical skills for ACLS, Primary Trauma Care and Laparoscopy courses.



## Community Out Reach Program

One of the unique features of this college is the exposure of the students to out reach programs. A cluster of eight basic health units form the core of this program. The students are exposed to the under-served communities surrounding the Ghurki Trust Hospital and are able to provide counseling in basic health needs to these communities.

This enables them to deal with the problems of the under privileged indigent patients side by side with acquiring the latest knowledge in patient management at the very sophisticated Doctors Hospital & Medical Centre, Lahore.

## Library

A spacious air-conditioned library with covered area 5000 sqft. consisting of lending and reference portions is fully catering the reference and study needs of students and staff. More than 12,000 books including reference and lending and more than 200 bound journals on different subjects are available.

A separate library under qualified staff is functioning in the Ghurki Trust Teaching Hospital, Lahore. More than 900 books on different subjects are available in the library satisfying the book needs of students and staff of Ghurki Trust Teaching Hospital, Lahore.





# LMDC Athletics

## Sports at Lahore Medical & Dental College

Sports at LMDC is a tradition instilled with competitive athletics and cooperative team events including football, cricket, basketball and more. Our current athletic programs include:

Hockey  
Football  
Cricket  
Badminton  
Basketball  
Rowing  
Volleyball  
Table Tennis  
Long Jump  
High Jump  
Running  
+ More



Our large sports field offers the space and equipment needed to hold all sporting events including our annual sports day celebration.

Annual Sports days are celebrated every year. All students and staff participate in this colorful event. These events create a healthy environment for the students and inculcate a sense of healthy competition in them. Winners are awarded prizes, shields and Trophies.



## Sports Day LMDC

LMDC's Annual Sports Day has been a tradition for the last 15 years holding various events for our students. Main sports events included 100m and 200 m boy's and girl's race, sack race, musical chair event, tug of war between staff and students, rowing, electronic sports and other events. On the closing day, the Chief Guest in his address had high praise for academic complex and the faculty of Lahore Medical & Dental College, Lahore and distributed the prizes.

### Transport Facility

LMDC offers our students air conditioned coasters for pick and drop across Lahore making transport to and from the college easy. These coasters offer cost effective, modern, reliable and safe transport facilities from and to any corner of Lahore.

### On Campus Banking

Thanks to our partnership with JS Bank we offer our students on campus banking via the JS Bank booth. Students can handle all their transactions, deposits, and transfers right on campus.

### Girls Common Room

The college administration has provided an air-conditioned, newly renovated common room for female students with all requisite furniture, attached bathroom and maid service.

### Security

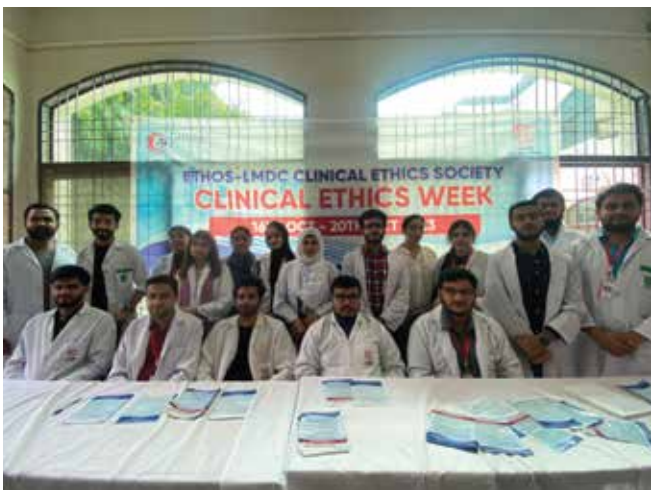
Complete and full-fledged standard security arrangements have been made on campus and in the hostels which include 26 security guards, CCTV cameras, road blocks, raising of boundary walls with blade wires, construction of security posts etc. All the security staff is fully armed and is on duty round the clock. We assure the safety of all our students and staff on a 24/7 basis.



## Co-curricular Student Societies

Co-curricular activities fuel your learning by stimulating creative thought, improving your social and organizational skills, developing your interests and talents, and offering you the chance to switch off and do something you really enjoy. Lahore Medical and Dental College strives to provide its students with excellent facilities in all recreational activities. Following student societies work under the supervision of senior Faculty member

- Blood donation society
- Health Awareness Society
- Painting & Handicraft
- Patient Welfare and Medical Ethics Society
- Photography society
- Research society

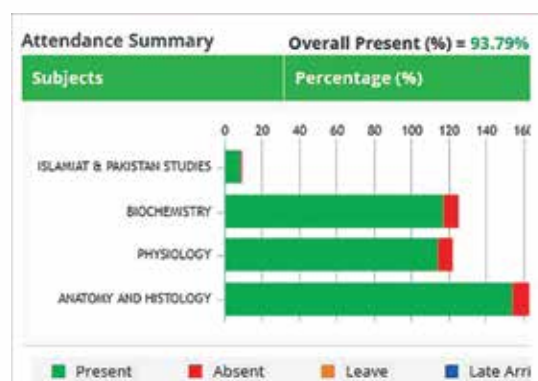


## Computer Education & Information Technology Department

In today's Hi-tech world, it is essential that the students should be computer literate and we strive to help our students achieve that goal. Medical informatics is emerging as a field in itself. The college has developed basic introductory computer courses to teach students to carry on online education & relevant applications in clinical epidemiology, biostatistics and decision making.

IT Department provides support in following areas:

- Students accounts of web portal & Mobile APP.
- Email Services Management
- Internet / Wi-Fi facility in college & hostel.
- Digital attendance & test system for students.
- Maintenance of IP surveillance center (over 350 Cameras).
- Biometrics attendance system for staff.
- Audio visual support & photography.
- IT Workshops for faculty / staff & students.
- SMS & Mobile App communication system.
- Academic data preservation in admissions, examinations, attendance, tests & Convocation.



### LMDC Digital Library & HEC Digital Library

LMDC is proud to present LMDC digital library (<http://imdodigital.com/>) to help further our students' education. It contains an extensive amount of digital educational material which is available to all students and is being updated periodically. This includes tutorial videos, as well as interactive diagnostics and procedure-based learning tools. LMDC is also registered with HEC National Digital Library Program (<http://www.digitallibrary.edu.pk/mdo-Lohore.html>) to have the access of international scholarly literature, based on electronic contents, peer reviewed journals, databases, articles and e-books across a wide range of disciplines.

### Computer Research Lab & Green IT Lab

Computer Research Lab comprises of 35 computer system and equipped with audio visual facilities. Green IT Lab is equipped with state-of-the-art technology and comprises of 70 virtual desktop stations and audio-visual facilities. IT skills workshops and computer-based lectures & tests are conducted in IT Labs.





**EDUCATION** the  
**FUTURE,** for  
tomorrow  
belongs to the  
people who  
prepare for it  
**TODAY**





# Student Housing / Hostels

LMDC offers our students comfortable housing located within walking distance from our main campus. Our hostels include separate buildings for both men and women with a total of 438 shared and single rooms as well as a phase that accommodates doctors, house surgeons, and postgraduate trainees.

To make your stay with us enjoyable we offer a fully staffed mess hall for dining, 24 hour power backup through alternate electric supply generators, high-speed wireless internet, around the clock security via armed personnel as well as a state of the art CCTV hostel wide camera monitoring system – giving you a peace of mind so that you can relax and focus on what is important while we take care of the rest.

Our hostels also offer extra curricular activities when you need a break from your books including table tennis, badminton, a fitness gym, as well as a full basketball court. New additions are currently being added to further improve our housing and to make your stay more enjoyable – check out website soon for new updates to the LMDC Housing Facility.

- Hostel charges are non refundable
- Hostel charges are to be paid for the entire academic year
- Security charges (Rs. 10,000/-) are refundable
- Hostel timings, visit timings to be followed strictly
- **Visiting hours:**

Summer	04:00 pm – 09:00 pm
Winter	03:00 pm – 08:00 pm
Sunday	09:00 am – 09:00 pm
- In case a student wants to avail relaxation in reporting time, a written permission is to be obtained a day prior to the programme. The address and contact number are to be left with the hostel authorities, Failure to abide by these rules will result in being marked absent and disciplinary action will be taken in accordance with rules..
- First aid facilities are available in the hostel; and ambulance is also available if required.
- A complaint register is available with the house keeper. Students can meet the house keeper in hostel office from 06:00 pm to 11:00 pm daily.
- Unauthorized use of electric appliances is punishable with double the normal rates as fine.
- The Asst. Warden is competent to expel a hostelite who is defaulter of hostel dues.
- The cost of damage to the hostel property caused by a hostelite will be recovered from him/her.
- For complete housing rules and regulations please visit our website.



## Punishment/Penalties

One or more of the following penalties/punishments will be imposed on a student found guilty of an offence or an act of indiscipline.

1. Written warning
2. Summoning of parents
3. Turning of students out of class
4. Fine
5. Suspension from classes
6. Rustication from college and hostels for a specific period
7. Expulsion from college and hostels permanently.
8. Any other penalty/punishment.

## Student's Leave Policy

1. The students are discouraged from taking leave during their study period because it affects their academic progress and UHS has also increased its mandatory attendance percentage from 75% to 85%.
2. Students are informed that if they take leave during the academic session, they will be responsible for making up for any attendance deficiency themselves.
3. Leave will only be sanctioned in extreme emergencies, such as the death in family, wedding and other unavoidable family circumstances or the student's illness.
4. A written leave application by the student/parent is only accepted after being signed by the respective Head of Departments.
5. For sick leave, a medical certificate issued by a registered medical practitioner, will be attached with the leave application.
6. After completing the requirements, a leave letter is issued to the student in which it is clearly stated that if any attendance deficiency occurs due to this leave, the student will himself/herself be responsible for making it up during the current academic session.
7. A copy of leave letter is also sent to the concerned Head of Departments and the IT Department. Information regarding the leave is also sent to students' parents by courier.
8. A copy of the leave is kept in the student's file for record.
9. Leave is not an alternative to attendance in the class. A student will only be marked present, if he/she is physically present in the class. Therefore, sanctioned leave does not count as present in the total attendance. It just amounts to the fact that the absence has been regularized against a legal action for absence (as defined in college fine policy for students). It does not allow any compensation of attendance.

## STUDENT FINE POLICY

### A. Fine on Attendance

1. 100% attendance is expected from students. However, to give some relief to student to overcome any kinds of emergency in life, 15% concession is provided before the student is allowed to take the examination. Therefore, 85% attendance is mandatory to appear in university examination.
2. Proxy is strictly prohibited. The offender will be punished with a fine or turning out of class. It actually amounts to CHEATING and thus is considered a character failing.
3. A fine of Rs. 500/- will be imposed for every unauthorized absence from lecture or bunking.

### B. College Dues

College dues will be paid as per the rules of PMDC. However, if not paid in time, name of student will not be available on student portal. This making the ineligible to be shown on ATTENDANCE for all classes. This can result in shortage of their attendance.

### C. Smoking

The entire college premises and hostels are No-Smoking Zone. Any student found indulging in smoking will be fined Rs. 1000/- every time.

### D. Drug Abuse

Use of prohibited drugs is strictly not allowed in college and hostels, and it is a serious offence. The offender will be imposed a major penalty including fine, suspension from classes, rustication from college/hostels or even expulsion from college and hostels.

### E. Fire Arms

Keeping fire arms in college and hostel is strictly prohibited and it is a serious offence. The offender will be imposed a major penalty including fine, suspension from classes, rustication from college/hostels or even expulsion from college and hostels.

### F. Political activities

Political activities of any kind, in any form are strictly prohibited in colleges and hostels. The offender will be imposed a major penalty including fine, suspension from classes, rustication from college/hostels or even expulsion from college and hostels.

### G. Dress Code

T-Shirts, Jeans, Short Pants, Tights, Sleeveless shirts, gaudy jewelry and noisy heels are not allowed. Students are expected to wear decent and modest dresses. Compliance of dress code is mandatory. Wearing a white coat with college ID card in classroom, tutorials, practical and in the college and hospital premises during teaching time is compulsory. The defaulter will be fined Rs. 1000/-.

### H.

H. Any kind of ragging and bullying within college as well as hostel premises at any stage during course can lead to termination from the college, and heavy fine will be imposed.

## Code of Conduct

### INTRODUCTION

All students of Lahore Medical and Dental College are to carefully read the rules and abide by the rules as envisaged in the prospectus, college notification, student guide, and their modifications as and when issued. Violation of these rules is tantamount to breaching college discipline. The case may be investigated by the designated inquiry committee and forwarded if needed to the Disciplinary Committee for further action. The recommendations will be forwarded to the Principal/Dean of LMDC for necessary further action.

### 1. GENERAL RULES

- a. The students must display their identification cards at all times while on college premises and the hospitals.
- b. Students must maintain the decorum of the college by displaying decent and respectable behavior.
- c. Students are not allowed to move aimlessly within college premises.
- d. Students must be punctual at any specified college activity.

### 2. ACADEMIC REGULATIONS

- a. Mandatory compliance is expected of the rules and regulations vide- Undertaking given on admission (Appendix A). All fines imposed and disciplinary actions taken will be mentioned on the college leaving certificate.

### 3. DISCIPLINARY REGULATIONS

- a. Ragging is strictly prohibited. Anyone found guilty will be imposed a heavy fine and other disciplinary actions including rustication/ expulsion from college/ hostel.
- b. The students should wear a white coat and their I.D tags all the time during academic hours.
- c. Roaming on college premises is prohibited.
- d. The appearance and dress code must be by the accepted norms and dignity of the profession. The following are not allowed:
  - I. Extreme hairstyles
  - II. Revealing clothes
  - III. Visible body parts
  - IV. Body and face jewelry (except small ear studs, necklace, and simple ring)
  - V. Untidy dress
  - VI. Slippers
  - VII. Track Suite Trousers
- e. Pasting/ hanging posters, graffiti, and promotion material of any kind is prohibited.
- f. Any type of political activity, demonstration, protest, or procession is strictly prohibited. Offenders/ abettors will be expelled from college.

## Code of Conduct

- g. Any damage whatsoever caused by the student will be recovered/ repaired 'as per actual' from him/ her. A fine may also be imposed.
- h. All students must provide their and parents' / guardians' correct mailing addresses e.g., phone numbers and emails. Any falsification in this regard will be considered a breach of discipline and any loss to college, consequently, will be recovered from the student in addition to fine.
- i. Use of Alcohol and drugs and keeping of arms of all types are strictly prohibited. The offender will be expelled from college.
- j. Falsification/ abuse of college record/ data shall be considered a serious offense, resulting in strict disciplinary action.
- k. Any misconduct/ negligence on the part of a student which endangers the life, health, and safety of other students and/or staff or brings disrepute to the college shall be considered a serious offense and will be punished accordingly.
- l. Violation of morals, such as the use of indecent language, inappropriate remarks, and gestures, abusive quarreling, fighting, and insolence towards fellow students, faculty, or staff.
- m. Impersonation of any academic, financial, or otherwise gain shall be considered a serious offense and will be punished accordingly.
- n. Theft and fraud will bring severe punitive action to the offender.
- o. Any intimidation/ harassment for the reasons of age, gender, race, disability, or religious belief shall result in expulsion from college.
- p. College and Hostel premises are strict 'NO SMOKING' zones. Non-compliance in this regard will result in a fine of Rs.1000/- and a warning. The parents will also be intimated. On the next violation, rustication of students will result. The third violation will result in expulsion from college.
- q. Any kind of press conference, interview, writing articles, etc. in media (print and electronic) are strictly prohibited violations shall be seriously punished.
- r. Parking of vehicles of students inside college premises is not allowed.





The Lahore Medical & Dental College Convocation is held periodically to celebrate and to acknowledge the achievements of our graduating classes from both the college of medicine and college of dentistry.

The event includes key note speeches, award and degree presentation, as well as a celebratory lunch held for faculty, students, and their families. This event marks the culmination of years of hard work and dedication by our students and is our way to show them not only our appreciation but to also express our great pride in their accomplishments.



## About Pakistan

Pakistan, one of the ten most populous nations in the world, is bounded by the Arabian Sea in the south, Iran on the west, Afghanistan on the north west and India on the east. Geographically, Pakistan is bestowed with Nature's bounty of mighty mountains, lush green valleys, sparkling rivers & ancient deserts. From the mountain peak of K-2 in the Karakoram range (Height 28,251 feet) in the north to the Arabian sea in the south. The country whose history goes back to 400 BC (Hrappa ruins in Punjab) has a cultural heritage which is a fascination. Even more remarkable is the hospitality of the people. The landscape in Pakistan is a study in contrast.

The terrain varies from sandy deserts & lush green plains merging into some of the highest mountain ranges in the world. In the summer months, when plains get increasingly hot, pleasant weather is only a 4 hours drive to Murree Hills and the gullies. These hill resort areas receive tremendous snowfall in winter, yet they are only 300 kms away (from Lahore).



## About Lahore

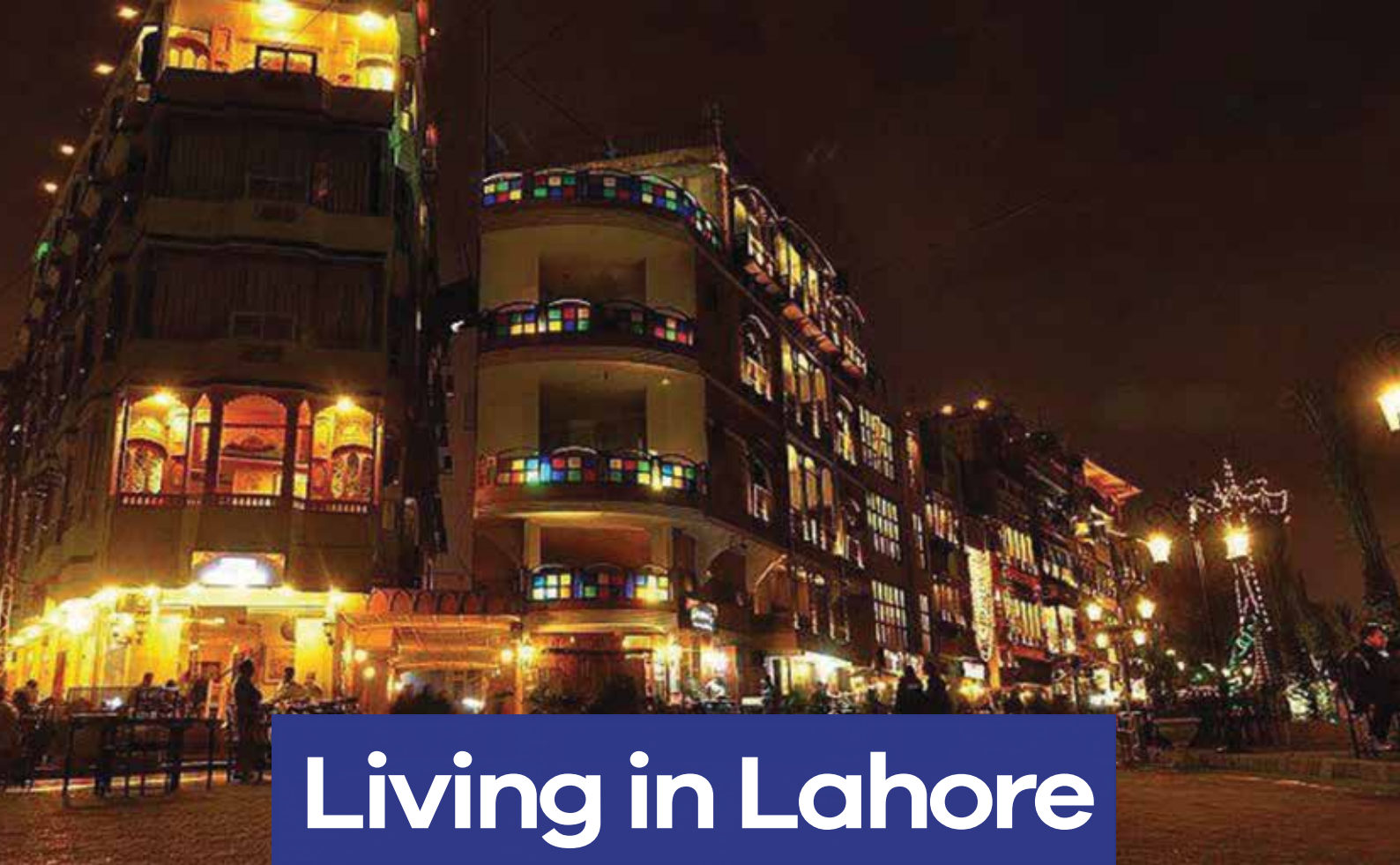
Lahore, the glorious capital of Punjab, is the second largest city of the country, and is Pakistan's cultural, educational and artistic center. The origins of Lahore are obscure but documentation about this city shows it to be 10 centuries old at least. The "old city" of Lahore was walled in the 16th century, with 13 gates. The gates are still there, as are parts of the wall.

Outside the walled city is the colonial city built during the British rule. Modern Lahore is a series of Suburbs. In all, Lahore is a vast, sprawling, ever expanding city, a clash of Moghul and colonial as well as contemporary architecture, with many gardens and parks, tombs, mosques and mausoleums.

Presently, the population of Lahore is over 5 million, elevation is 213 meters above sea level, summer temperatures are 18 C & 44 C and winter temperature are between 5 C & 28 C.







# Living in Lahore

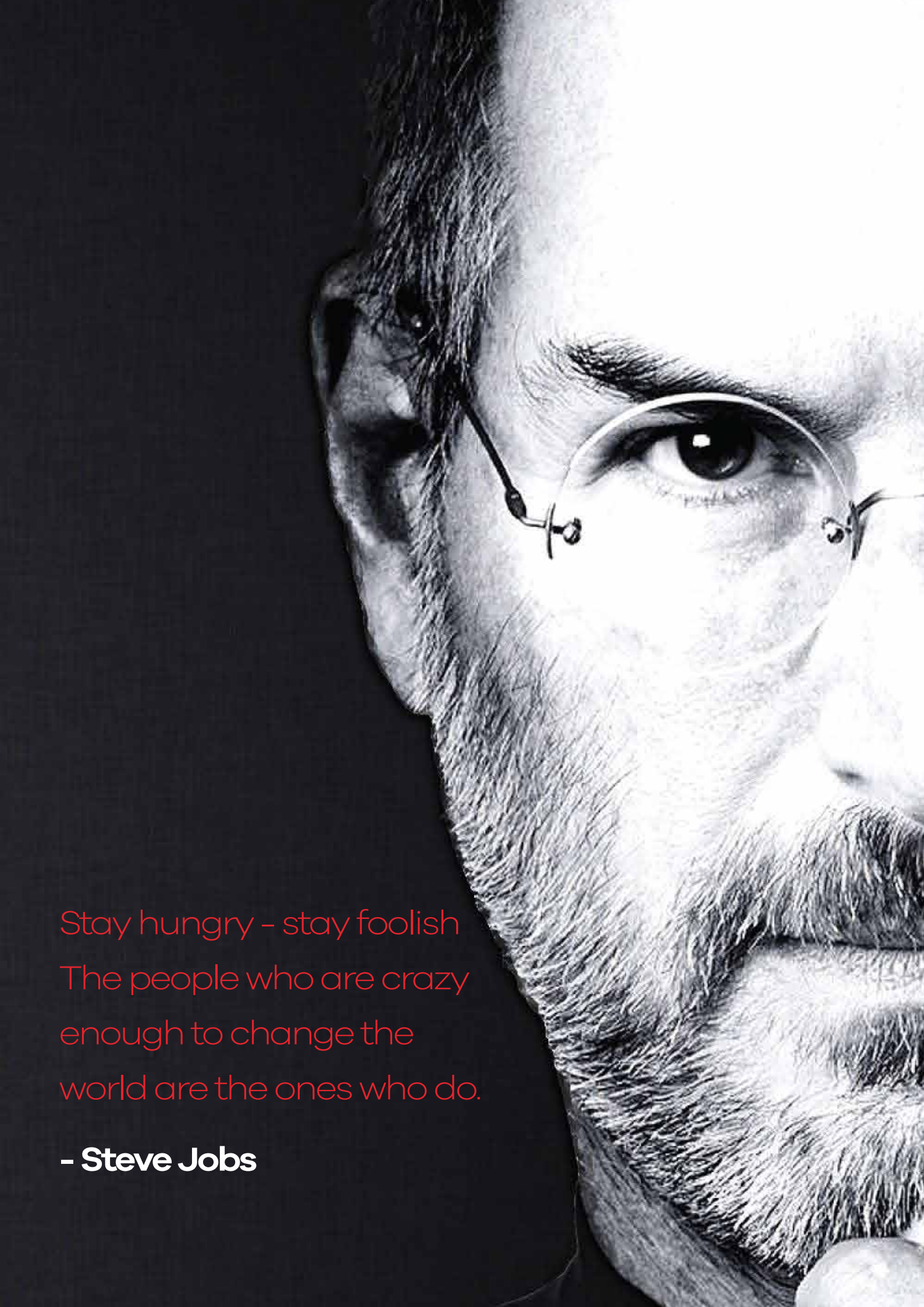
Historically Lahore has been called “Paris” of Indian Subcontinent. It is the cultural and educational capital of Pakistan. Lahore has a friendly, relaxed atmosphere and is easy to live in, with a variety of activities to suit almost anyone. From the newly developed serene suburbs and colonies to the busy round the-clock facilities available in the city centre, Lahore has something for everyone. Lahore is famous for the variety of available cuisine, be it the traditional food like Nihari, Halva Puri or Pa-ey, Tikka Kababs or fast food, every palate is catered to.

There are a number of culinary gems throughout the city from local classics to international brands including fast food chains and fine dining. Further showing its cultural diversity Lahore offers a wide range of entertainment, shopping, arts, and more with local establishments and international companies such as Nike, Ralph Lauren, Armani, Mc Donalds, Burger King, Subway, KFC, Next, Mango - just to name a small few.

There are a number of well-maintained parks and gardens for those who want to jog, walk or just spend sometime in the relaxing environments. Of these lush green expanses. Shalamar Gardens, Jehangir’s Tomb, Jinnah Gardens, Racecourse Parks, Model Town Park and Jallo Park are some of the most well known.

There are many world class movie cinemas, including IMAX, which run English, Urdu and Punjabi movies around the year with yearly film festivals. The Lahore Museum is the oldest and the largest of the country, was set up over a hundred years ago and gives an in depth look into the founding of Pakistan, its major historic events, and to the leaders who helped make it all happen.

Lahore truly is a culturally rich city providing the best in food, shopping, entertainment, and education. Whether you are a local Pakistani or a visitor from abroad, Lahore offers the comforts and conveniences you are used to to make you feel at home.



Stay hungry – stay foolish  
The people who are crazy  
enough to change the  
world are the ones who do.

**– Steve Jobs**





# Lahore Medical & Dental College

P r o s p e c t u s

Tulspura, North Canal Bank, Lahore - Pakistan 53400

Mobile: 0346-4418891-98 (8 Lines)

[info@lmdc.edu.pk](mailto:info@lmdc.edu.pk)

[www.lmdc.edu.pk](http://www.lmdc.edu.pk)